

IRON ORE HERITAGE RECREATION AUTHORITY

An aerial photograph of a lush green forested landscape. A winding road or path cuts through the dense trees, leading towards a small, calm pond. The background shows rolling hills under a clear sky.

DRAFT
11.15.22

RECREATION
PLAN

2023-2028

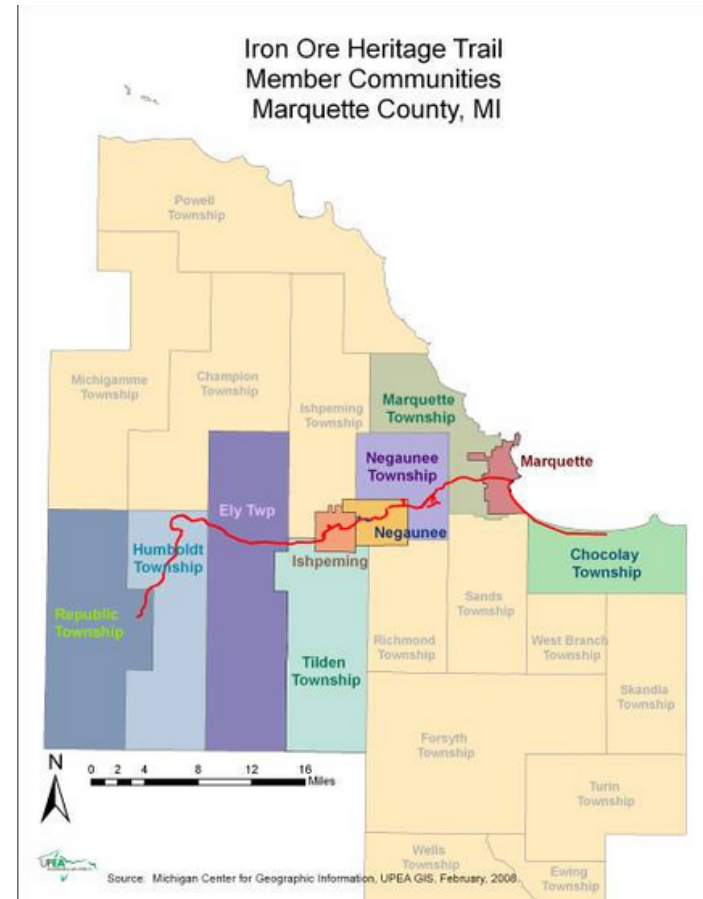
TABLE OF CONTENTS

Community Description.....	Page 1
Administrative Structure.....	Page 7
Recreation Inventory.....	Page 14
Accessibility.....	Page 22
DNR Status Reports.....	Page 23
Planning Process.....	Page 25
Goals and Objectives.....	Page 28
Action Plan.....	Page 30
Supporting Documents.....	Page 31

IRON ORE HERITAGE TRAIL COMMUNITY DESCRIPTION

The Iron Ore Heritage Recreation Authority (IOHRA) was created under the provisions of Public Act No. 321 of 2000: the Recreational Authorities Act (our Articles are attached) and is the managing Authority of the Iron Ore Heritage Trail (IOHT), www.ironoreheritage.com currently a 47-mile, multi-use, year round, interpretive trail. Our communities include (from east to west: Chocolay Township, City of Marquette, Charter Township of Marquette, Negaunee Township, City of Negaunee, City of Ishpeming, Tilden Township, Ely Township, Humboldt Township, and Republic Township.

The **stated purpose** of Iron Ore Heritage Recreation Authority within our Articles reads: to **acquire, construct, operate, maintain and improve a permanent, year-round, signed and surfaced trail system, provide for a multi-use trail system that connects populated areas and provide amenities along the trail including parking areas, bike racks, directional signage, interpretative signage, kiosks, trailhead facilities, etc., that add to the enjoyment of the trail experience, promotes tourism, and encourages member municipalities to link into our spine trail.**



IRON ORE HERITAGE TRAIL COMMUNITY



The combined population of our 10 communities is **51,039**. The common threads of our residents

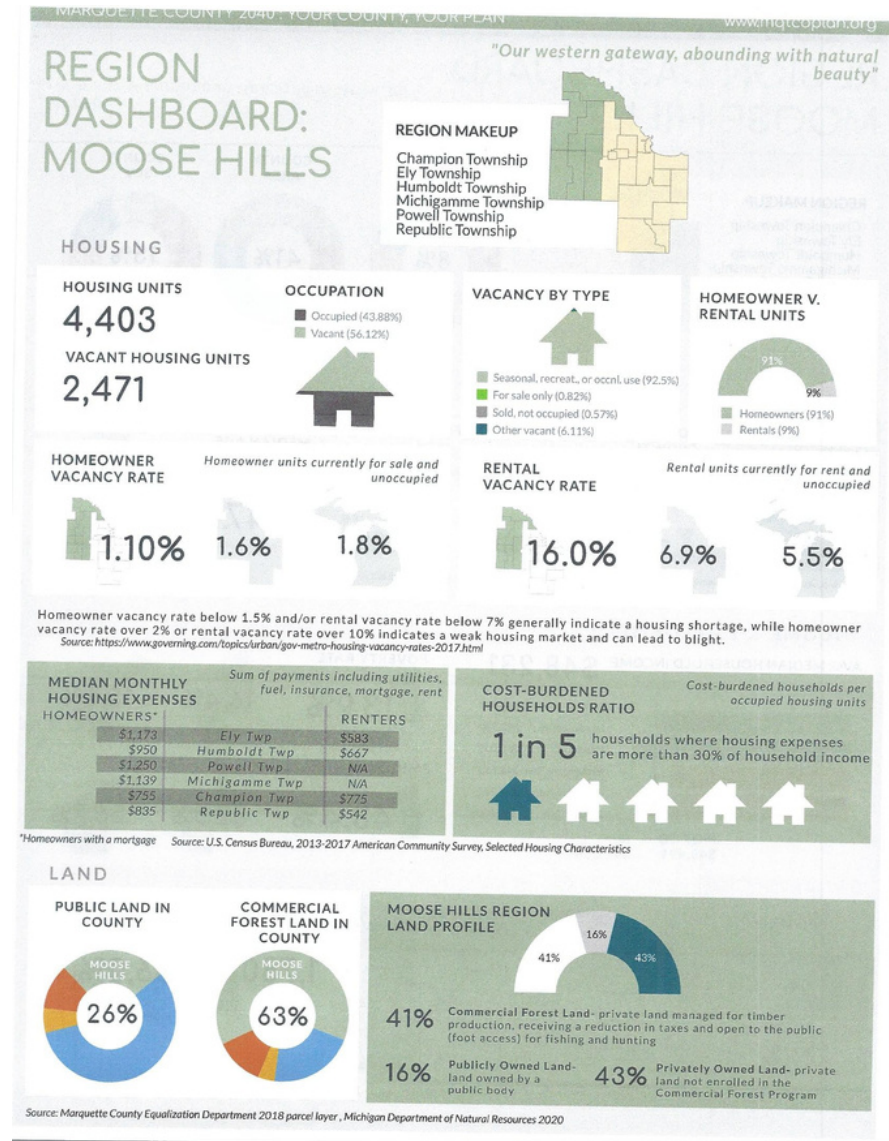
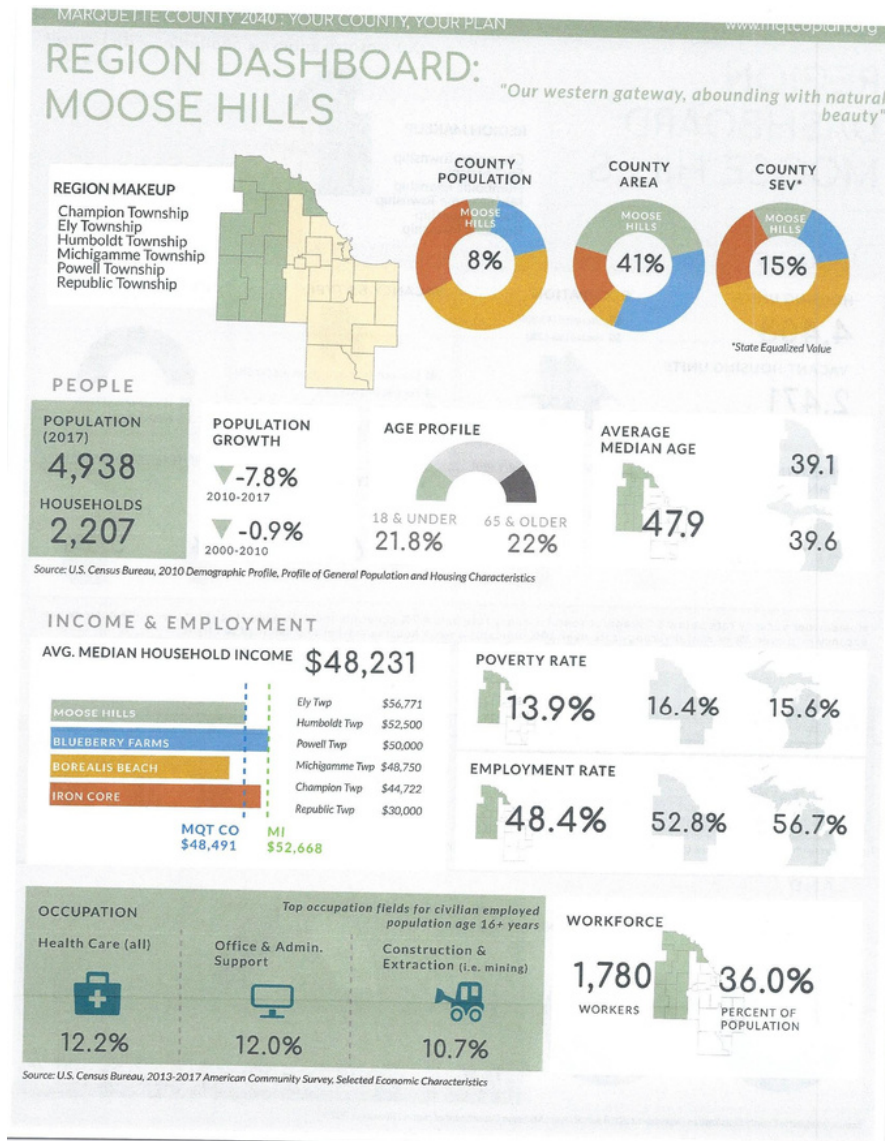
- we are aging (14.7% of total population in 2010 was over age of 65, now it is 20%)
- we are white (over 90% of the population), and
- we share our past and present relationship as an iron ore mining community.
- we value our environment with it's natural features: woods, water, wildlife (see next page, Marquette County Planning Survey)

The County, in its latest Master Planning document, grouped our County into four representative regions: Moose Hills in the western County, Iron Core in the middle of County, Borealis Beach along the eastern edge, and Blueberry Farms to the South. The pages below share the data on the first three regions where our trail runs through.

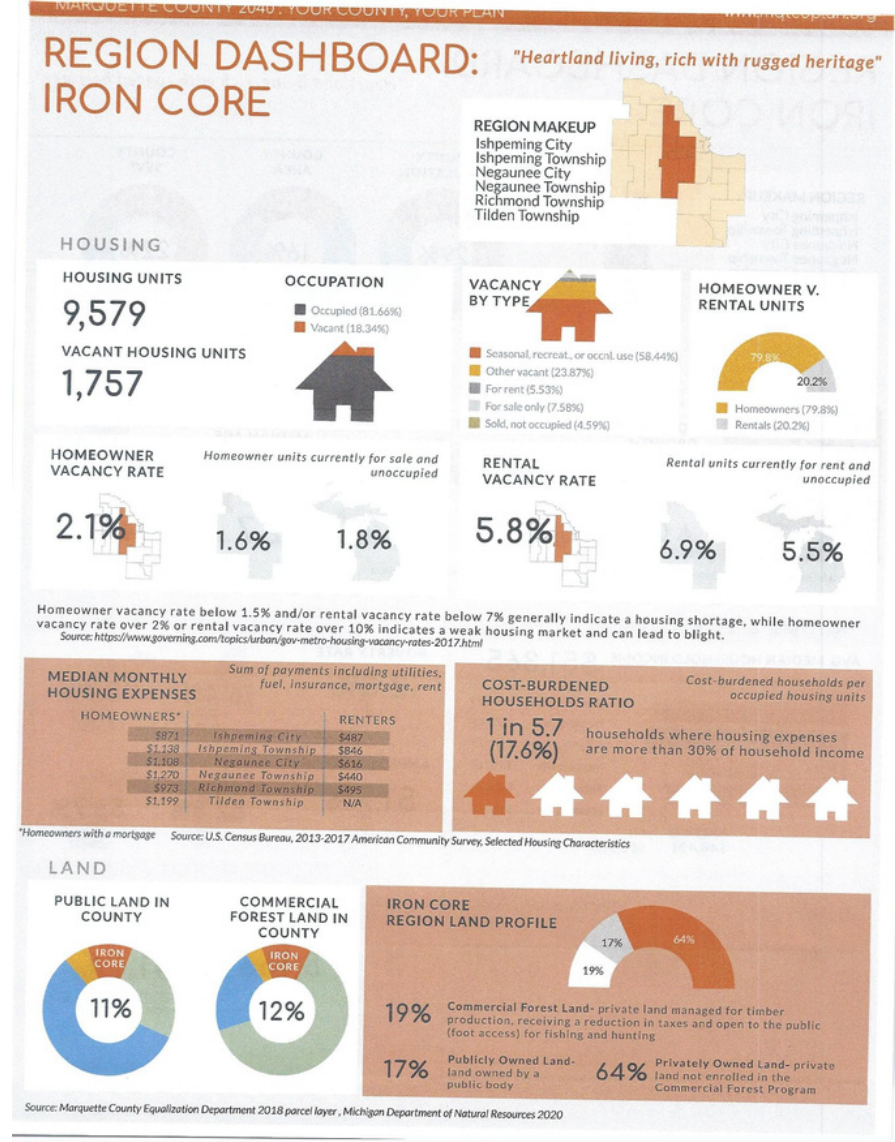
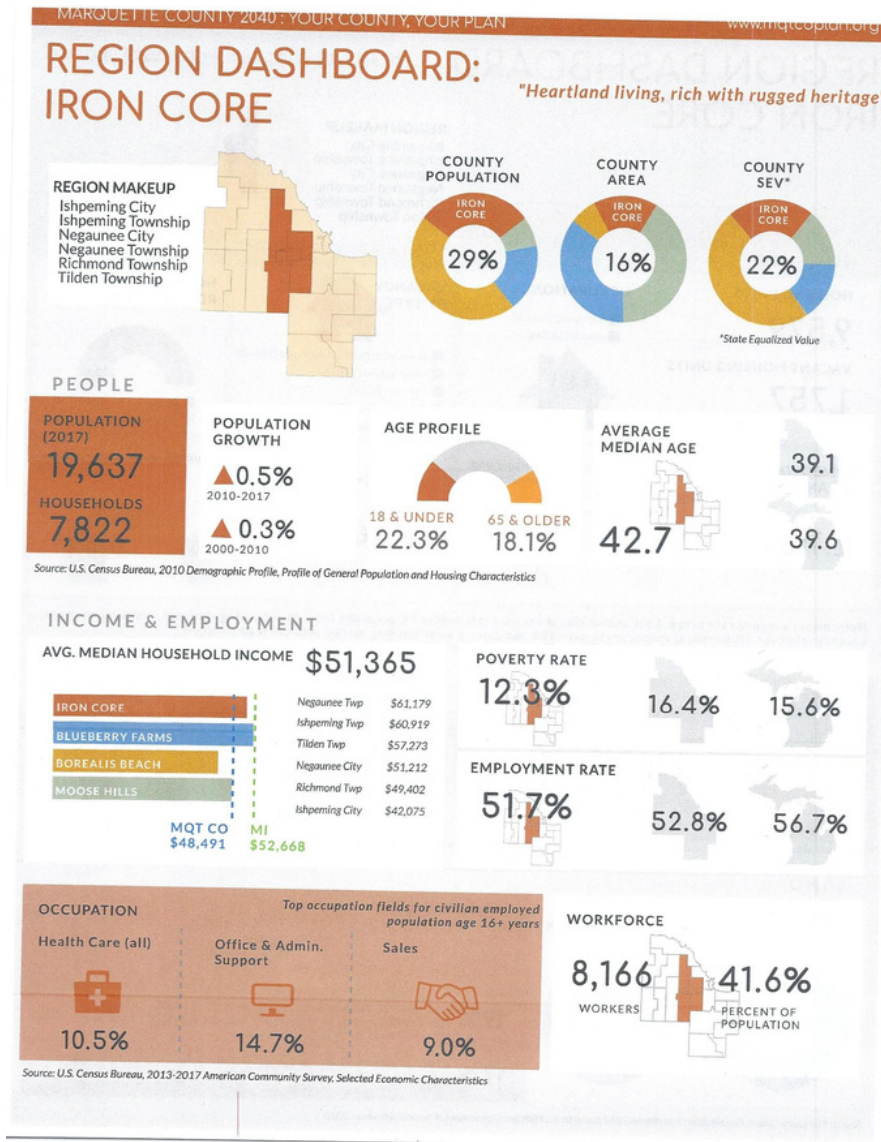
IRON ORE HERITAGE TRAIL COMMUNITY



IRON ORE HERITAGE TRAIL MOOSE HILL COMMUNITY DASHBOARD

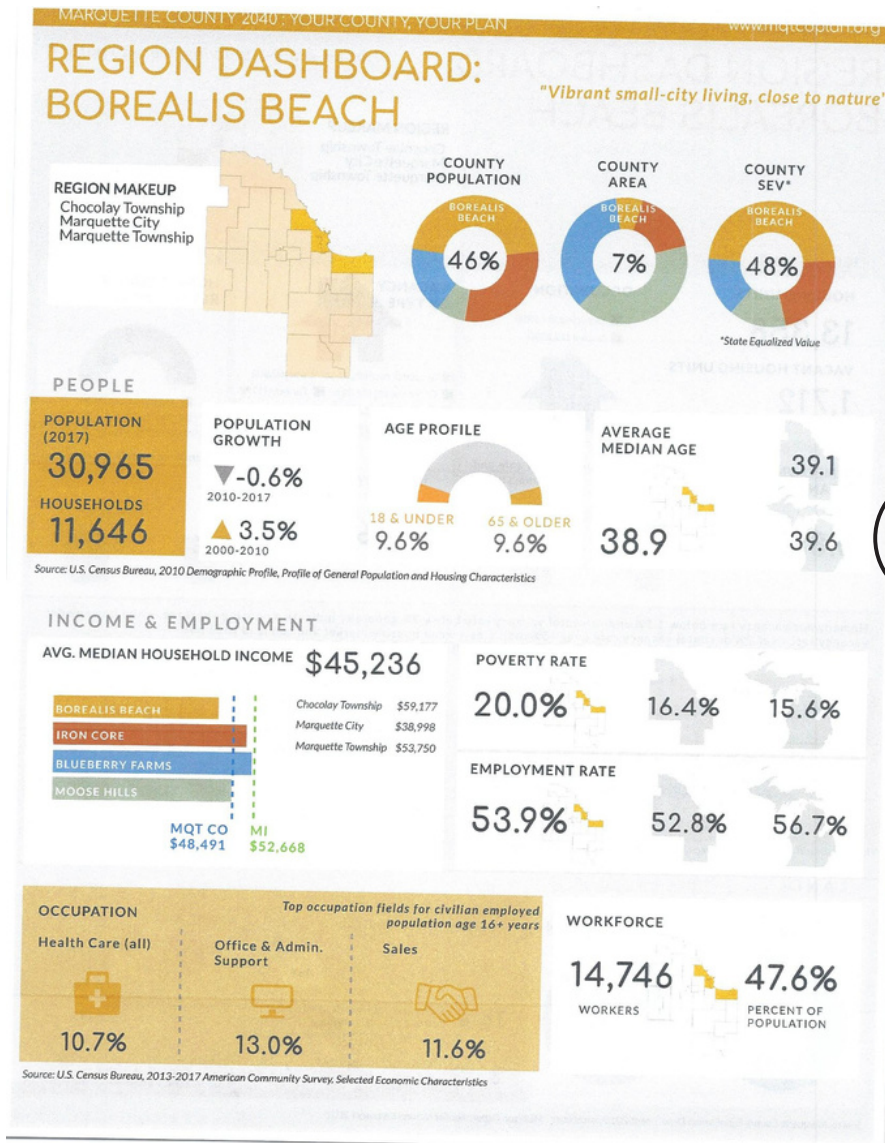


IRON ORE HERITAGE TRAIL IRON CORE COMMUNITY DASHBOARD

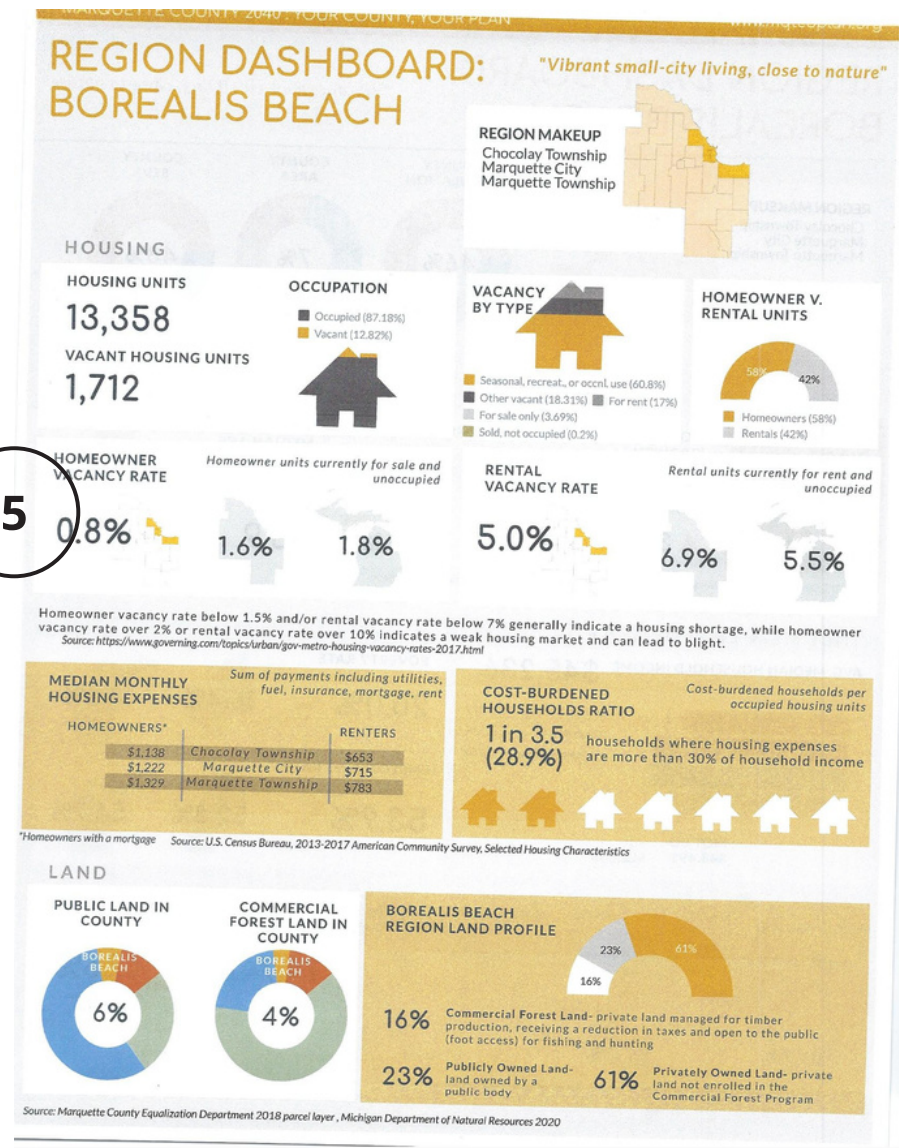


IRON ORE HERITAGE TRAIL

BOREALIS BEACH DASHBOARD



5



IOHRA ADMINISTRATIVE STRUCTURE

The Iron Ore Heritage Recreation Authority (IOHRA) was established under the Recreation Authorities Act 321 of 2000: Recreational Authorities Act. We signed our Articles of Incorporation in May 2007 and now have eight municipal members who initially voted in a .2000 millage in 2010 to fund the Authority and build the trail and amenities. Due to the Headlee Amendment, our millage is now at .1970. Our eight municipal members are: **Cities of Ishpeming, Negaunee and Marquette and Townships of Republic, Tilden, Negaunee, Marquette and Chocoley**. We provide a written report to the members annually and present to their boards periodically. Our ballot language provides us millage renewal funding for six years at a time. We must get the approval of the municipal members prior to putting our millage renewal on their ballot. As a small, tight community, we work closely with the Managers and Departments on trail issues including maintenance, amenities (trailheads), interpretation, and planning.

Two municipalities, Ely and Humboldt Townships, although in our geographic region, did not pass the millage and they are not included in our membership, have no appointed members to our board, and none of our millage funding goes to their portion of the trail. However, we do operate as a State ORV sponsor and operate this portion of the trail under those auspices.

IOHRA ADMINISTRATIVE STRUCTURE

THE BOARD

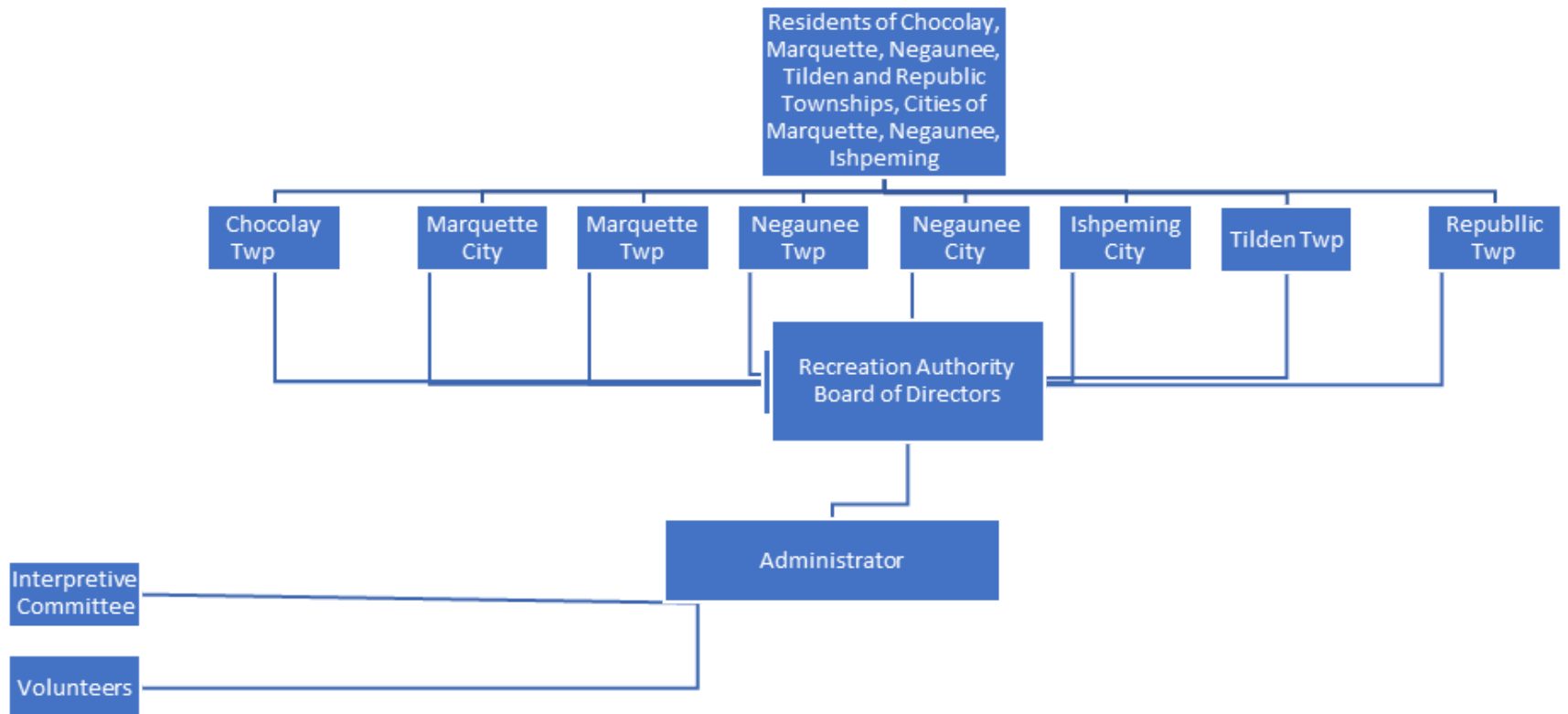
Our Authority is directed by a Board of nine members (one member appointed by each of our municipal members and one appointed by the County.) An Administrator was hired in 2010 and works for the Board to carry out its mission. The board meets monthly and provides the direction of the organization.

THE BUDGET

The budget is approved by the board in the autumn for the following fiscal year (January-December). The budget provides insights into the priorities of the Board. Capital improvement projects are generally funded through the general fund plus Federal, State, and local grants. Operations and maintenance are funded through the general fund provided by the millage and other fundraising activities.

An Executive Committee was established and consists of four members: Chair, Vice Chair/Secretary, Treasurer and Executive At-Large.

IRON ORE HERITAGE TRAIL ORGANIZATIONAL CHART



IRON ORE HERITAGE TRAIL 2022 BUDGET

INCOME Millage State Grants ORV Grants Other	330,000 73,300 35,000 <u>10,000</u> 448,300
EXPENSES Operations	117,000
CAPITOL IMPROVEMENT Negaunee Township Trailhead Asphalt Repair Signage Equipment	120,000 110,000 12,000 <u>,9000</u> 141,110
MAINTENANCE ORV Brushing, mowing Trail Supplies	35,000 20,000 <u>2,000</u> 57,000

IRON ORE HERITAGE TRAIL PARTNERS

The Iron Ore Heritage Trail is an evolving, living project with many partners. So much of what has been accomplished is due to people and organizations who committed resources to help the IOHT. Through stakeholder meetings early on in the process organized by the LSCP, a Marquette County economic development organization, to community visioning sessions aided by NPS RTC staff, to coalitions who took van excursions down the trail, we've worked hard to build a community-focused project.

The State's DNR and local municipalities have provided us with their land, expertise, and funds.



We continue to partner with organizations through our adopt-a-mile program (see next page). We work closely with the snowmobile and ORV clubs to share resources and schedule maintenance. We have reached out to SAIL, Superior Alliance for Independent Living, to help make our projects Accessible to all, and we have a great team of private businesses: engineers, artists, landscape architects and fabricators who provide the "look" of the IOHT.

IRON ORE HERITAGE TRAIL PARTNERS

Adopt a Mile Organizations

- Greater Ishpeming Community Foundation Youth Advisory Committee,
- U.P. Health Systems Bell Memorial
- , Island Lake Crew,
- Ishpeming Lions Club,
- Negaunee Lions Club,
- Chris Pierce,
- Illikainen Brothers,
- Connect Marquette,
- B3 Fitness,
- Rotary Club of Marquette,
- University of Michigan Alumni Organization,
- Marquette Community Foundation Youth Advisory
- UP Health Systems Marquette Employee Relations Committee.

They organize general clean up, trash pick up and brushing 2x a year.



IRON ORE HERITAGE TRAIL PARTNERS

- **Team Rider ORV Club**
- **Moose Country & UP Central Snowmobile Clubs**
- **Member Municipalities DPW, Recreation, Planning Departments**
- **Superior Alliance for Independent Living**
- **Marquette County Planning**
- **Noquemanon Trail Network**
- **Michigan Iron Industry Museum**
- **CUPPAD**
- **Travel Marquette**
- **Michigan Arts Council and MEDC**
- **Michigan DNR Staff**
- **Ad Hoc Committees: Maintenance, Millage Renewal, Carp River kiln Restoration, Recreation Plan**
- **Events Coordinators: Polar Roll Snowbike, Iron Range Roll, Marquette Marathon, and Marji Gesick**

RECREATION INVENTORY TRAIL

The Iron Ore Heritage Trail is currently a 47-mile, multi-use, year round, interpretive rail-trail across the Marquette Iron Range, Marquette County, MI. Its western terminus is the Republic Bank Building and its eastern terminus is Chocolay Township's Kawbawgam Pocket Park. The trail is a mixture of asphalt, crushed aggregate, and soil/ballast rock. Sections of the trail in Humboldt and Ely Townships do not have upgraded surfaces because they have not joined the Authority through the millage vote (as required in the Articles of Incorporation). The trail is asphalt in the urban areas and crushed aggregate in the rural areas.

We sought to build a "spine" trail that would connect cities, neighborhoods, and parks while also bringing people to historical places on the Marquette Iron Range. We've encouraged other municipalities and private development to link to the "spine".

Marquette, Marquette Township and Chocolay Township have additional paved trails that connect to the IOHT. The Noquemanon Trail Network and RAMBA offer dirt trails for mountain biking, hiking, trail running, and snow biking. The IOHT connects these two main single track trail systems and provides access to their trails.

Snowmobile trails extend in all four directions from the IOHT: north to Big Bay, west to Iron and Baraga Counties, south to Dickinson and Delta Counties, and east to Alger County.



Aggregate Trail, Negaunee Township



Asphalt Trail Ishpeming

RECREATION INVENTORY TRAIL

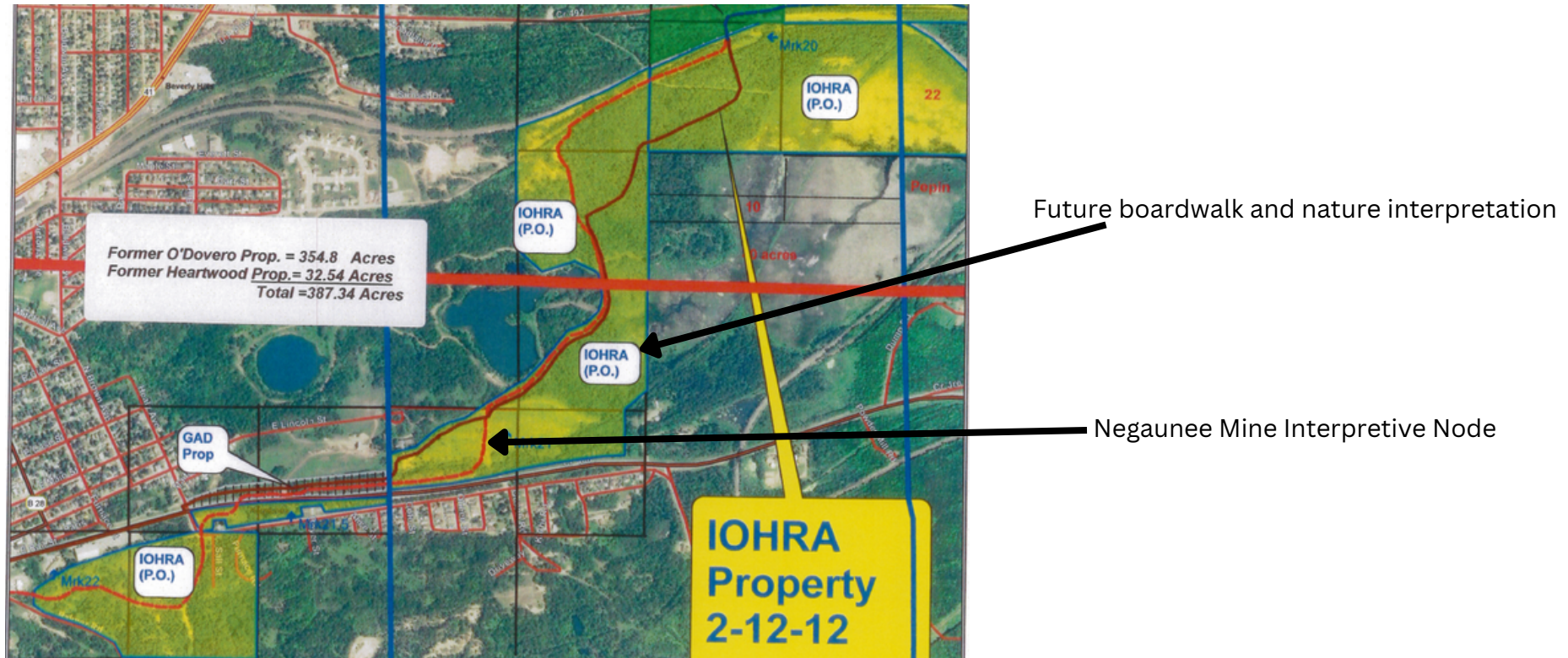
ORV trails end at our terminuses in Negaunee and Republic. There is one trail that extends to Champion from the IOHT.

Our user groups include: walkers, bikers, runners, wheelchair users, Class I E-bikes, skateboarders, roller skiers, snow bikers, snowshoers, cross country skiers, equestrians, ORVers and snowmobilers.

The IOHT is the longest rail/trail in the Upper Peninsula that has upgraded surfacing. and also uses it's trail to educate the public about our natural and historical offerings.



RECREATION INVENTORY LAND & AMENITIES

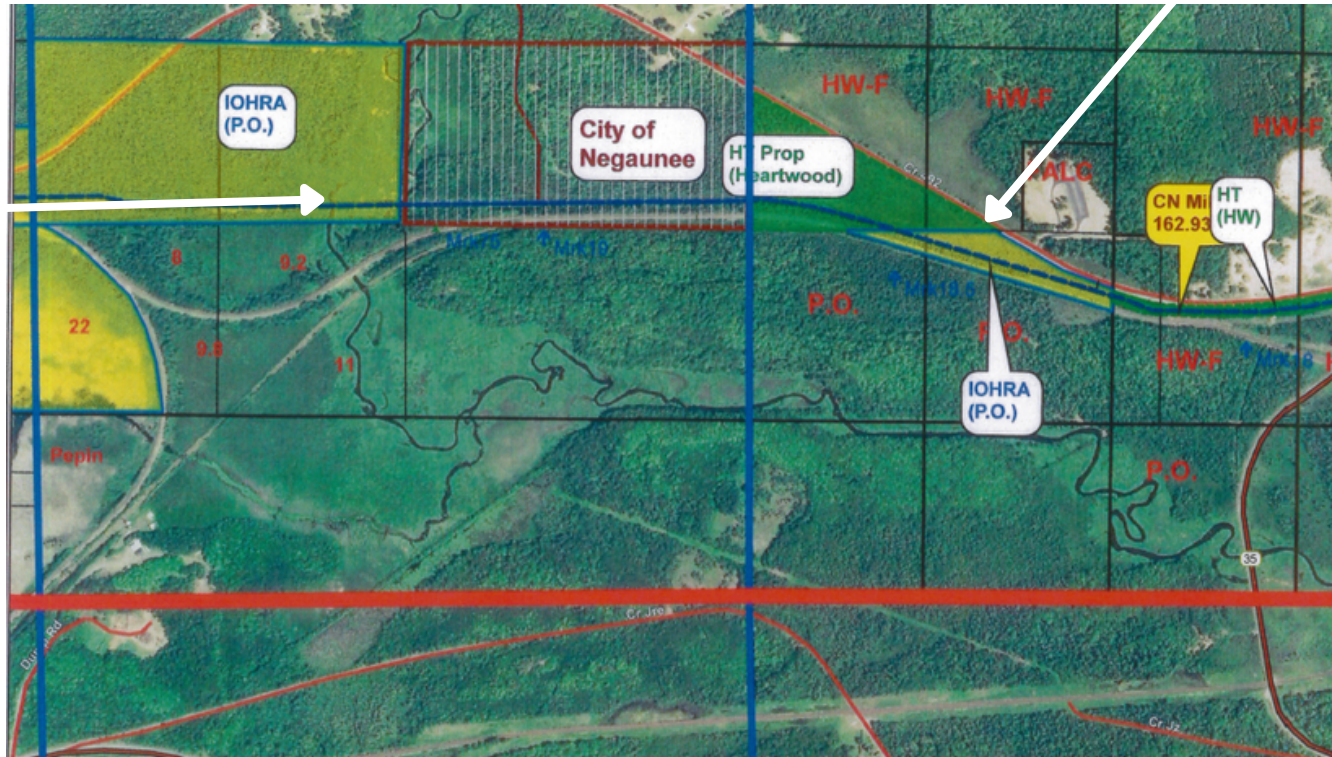


The IOHRA also owns 387 acres of land through purchase and land transfers. The property was acquired to provide for the trail. Our property has allowed us to build three accessible fishing piers and a bird watching platform along the Carp River, a new trailhead in Negaunee Township, and the Negaunee Mine interpretive node. Future plans include a boardwalk trail into a wetland, a campground, motorized trailhead and single track trails.

RECREATION INVENTORY LAND AND AMENITIES

Negaunee Township Trailhead

Bird Watching
Platform and
fishing piers



RECREATION INVENTORY - THE TRAIL AND ITS HIGHLIGHTS



RECREATION INVENTORY - THE TRAIL AND ITS HIGHLIGHTS



IRON ORE HERITAGE TRAIL NATURAL/INTERPRETIVE FEATURES

Trail Surface 47 miles total:
15 paved,
17 crushed aggregate,
15 ballast/gravel

Trailheads - 1 owned by IOHRA -
Negaunee Township Eagle Mills,
9 shared with other entities:
Chocolay Lions Field, MDOT
Welcome Center, Marquette
Commons, Marquette Township
Schwemwood Park, , Negaunee
Miners Park, Ishpeming Bancroft
Park, Republic Bank Building

Four fishing piers: 3 in Negaunee @
Carp River, 1 in Ishpeming.
Two wildlife viewing platforms: 1 at
Negaunee Carp River Watershed, 1 in
Tilden Township at Carp River
Crossing
Weather Shelter - 1 in Negaunee
Township

Interpretive Features/Artwork:
Carp River Kiln Interpretive Site,
Father Marquette Park Artwork, LS&I
Railroad Pavilion Artwork, Negaunee
Mine Site Artwork, Jackson Mine Site,
77 interpretive signs

Trailheads include kiosks, kiosk "you
are here" maps, parking areas, toilets
(except Schwemwood Park),
benches, bike racks, bike fixing
stations

56 Mile Markers, 23 Wayfinding
Signs, 49 Street Crossing identifiers



RECREATION INVENTORY AMENITIES



Negaunee Township Trailhead



Fishing pier



Carp River Kiln Site



Pine Hill Pond Weather Shelter



Carp River Birdwatching Platform

RECREATION INVENTORY

ACCESSIBILITY ASSESSMENT

The Iron Ore Heritage Recreation Authority consults with the Superior Alliance for Independent Living to incorporate scope items beyond the ADA regulations. However, at a minimum we have used the standards in the AASHTO Guide for the Development of Bicycle Facilities, 1991 edition. Any trail that we have built is at least 10' width with a minimum of 2' clear zone on both sides. The bridges we cross have a minimum of 14' width between rub rails. Most of our trail is either asphalt pavement or crushed limestone/granite that is hard packed. Also our slope follows the guidelines of: - 5% or less for any distance. - up to 8.33% for 200' max. Resting intervals no more than 200' a

Name of Park	Accessibility Grade
Iron Ore Heritage Trail	3 * (Ely and Humboldt Portions not accessible due to surfacing type)
Negaunee Township Trailhead	5
Fishing Piers/Bird Watching Platform	5
Pine Hill Pond Weather Shelter/Steps	3* steps to pond not considerable accessible

DNR GRANT STATUS REPORT

TF09-071 \$15,000	Manufacture and installment of interpretive signs	Grant Successfully Closed 2012, Signs Still in Place, no conversions
TF10-074 \$400,000	12-mile trail construction between Negaunee and Marquette	Grant Successfully closed in 2013, trail still open to public, no conversion
TF12-049 \$281,000 grant	5-mle cosntruction of trail in Tilden and Republic townships	Grant Successfully closed in 2014, trail still open to public, no conversion
TF14-0159 \$22,000	Manufacture and installment of 10 interpretive signs between Negaunee and Marquette	Grant Successfully closed in 2016, signs still in place no conversion
RP15-0040 \$16,800	Trailhead amenities at Lions Field, Schwemwood Park, MDOT Welcome Center and Republic	Grant Successfully closed in 2017, Amenities still available, no conversion
TF17-0008 \$163,600	Trail Shelters/Fishing Plers	Grant Successfully closed in 2020, Fishing Plers/Trail Shelter still open to public, no conversion

DNR GRANT STATUS REPORT

P20-0036 \$73,300	Negaunee Township Trailhead Development	Grant Successfully closed in 2022, open to public, no conversion
TF21-0051 \$218,200	Nature Trail/Boardwalk	Grant Agreement in progress, no on the ground work yet



TF09-071 Signage



TF12-049 trail construction & RP-15-0040 Trailhead Amenities

IOHRA PLANNING PROCESS

The Iron Ore Heritage Trail is guided by our Articles of Incorporation , our boundaries of the Authority members, and our ballot language. Our Articles stated purpose for the IOHRA read, *"acquire, construct, operate, maintain and improve a permanent, year-round, signed and surfaced trail system, provide for a multi-use trail system that connects populated areas and provide amenities along the trail including parking areas, bike racks, directional signage, interpretative signage, kiosks, trailhead facilities, etc., that add to the enjoyment of the trail experience, promotes tourism, and encourages member municipalities to link into our spine trail.*

Our ballot language reads, IRON ORE HERITAGE RECREATION AUTHORITY RENEWAL Shall the City/Township renew and continue to levy 0.1970 mill (\$0.1970 per \$1,000 of taxable value) to provide funds for the Iron Ore Heritage Recreation Authority (IOHRA) to enable it to continue building, managing, and maintaining the 47-mile, multi-use, year round, interpretive Iron Ore Heritage Trail, on the taxable value of all property assessed for taxes in the Township/City for six (6) years, 2023 to 2028 (inclusive).

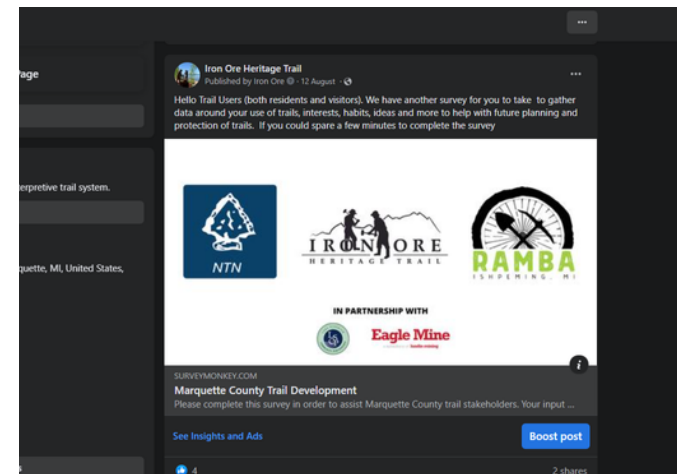
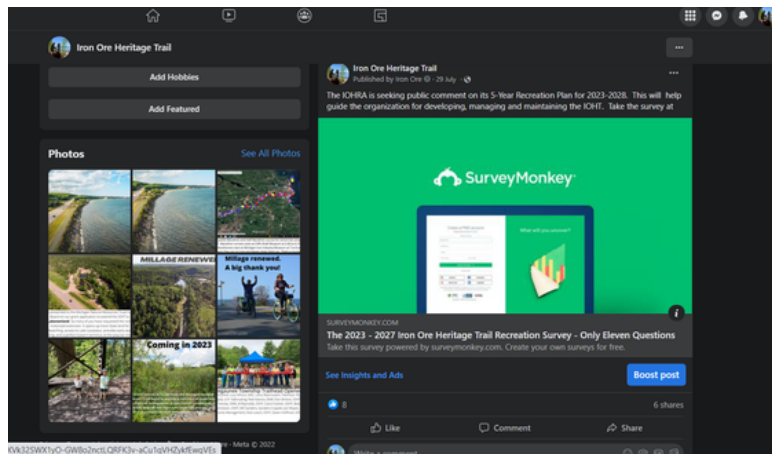
Our role in recreation infrastructure was kept narrow so that we could concentrate on building a long distance, multi-use, year round trail with amenities and interpretative elements that we promised the resident taxpayers. The ultimate decider of the job we are doing is the registered voter in our member communities.

IOHRA PLANNING PROCESS

Our planning process for the 2023 Recreation Plan modeled our previous efforts for Recreation Planning. We incorporated a survey designed through Survey Monkey and notified the community through blast emails, our Facebook page, Chamber of Commerce promotions, our web site, and event handouts with QR code.

Press Releases were sent to local print, tv, and radio media. We also printed surveys and placed at municipal halls and Senior Centers.

The survey time period was August and September of 2022. Survey results are in Appendix B. Previous to our survey being released, the Lake Superior Community Partnership, an economic development agency in Marquette, also designed a Survey to collect input on all non-motorized trails in Marquette County. We have incorporated those survey results as well and they are included in Appendix B. The IOHRA survey collected 330 responses while the LSCP collected over 1000 responses.



IOHRA PLANNING PROCESS

Staff and was also Board members notched hundreds of hours on the trail in the summer of 2022 due to many maintenance projects, signage installs, and ribbon cuttings. During those times, we also listened to trail users conversations and requests. Those requests are collated in the written comment section of our survey.

In October of 2022, we held a public hearing specifically on the feedback for our Recreation Plan and 5-year plan. We incorporated the hearing comments into our survey results.

The IOHRA also meets monthly and our meetings are open to the public. In autumn, we draft budgets based upon our priorities for the following year. These priorities are based on the feedback we receive during the planning process and our observations of maintenance needs.

After analyzing the survey results and public hearing comments, our subcommittee wrote our plan and distributed it to our municipal members for their comments. We also distributed three copies for the three public libraries in our region for the public to review. After our 30-day review, we provided amendments based on feedback.

Finally, a public hearing was held on and the IOHRA board supported the written document through a resolution dated....

Goals and Objectives

The SCORP provided assistance to the staff and Recreation Committee in developing the IOHRA's recreational goals and objectives. The goals and objectives from the SCORP have been adapted to fit our trail users' recreational needs. Public input from our residents and stakeholders also provided helpful engagement by way of our Community Survey and Public Hearing.

GOAL: #1: FOSTER STEWARDSHIP AND CONSERVATION WITH STAKEHOLDERS IN PROTECTING THE IOHT'S NATURAL AND CULTURAL RESOURCES.

Objectives:

- Work with our municipal, private and non-profit community to save our unique cultural, natural and historical features along the trail
- Improve the function of the trail by providing destinations incorporating our unique "Iron Ore Heritage" look.

- Continue the education component of the trail through signage, art, technology.
- Work with developers to provide buffer zones between developments and the trail to maintain the forested feel of the trail.
- Keep portions of the IOHRA-owned property undeveloped

GOAL #2: IMPROVE COLLABORATION WITH OTHER TRAIL GROUPS TO MEET THE TRAIL USER NEEDS OF RESIDENTS AND VISITORS

Objectives

- Encourage motorized and non-motorized to share corridors where safety needs can be met and/or are allowed through shared trails or separated by physical barriers.
- Encourage non-profit non-motorized groups to provide single track experiences that connect and/or use the IOHT corridor.
- Work with trail groups, DNR, CUPPAD, and other interested groups within and outside of Marquette County to meet the trail needs of our residents and visitors.

- Adapt to the new trends of trail use, ie electric bicycles, fat tire/snow bikes, and other motorized and non-motorized trail users.

GOAL #3: RAISE AWARENESS OF RESIDENTS AND VISITORS ON THE IOHT AND ITS RECREATIONAL OPPORTUNITIES

Objectives:

- Use Pure Michigan campaign, Rails to Trails, Michigan Trail and Greenways, Travel Marquette, social media and other media to provide information on IOHT and its offerings for trail users, fishermen, birdwatchers, geocashers, history buffs, etc.
- Work with event planners, schools, non-profits, fundraisers to provide programming activities along the trail system

GOAL #4: IMPROVE RECREATION ACCESSIBILITY FOR RESIDENTS AND VISITORS

Objectives

- Promote bicycling, walking, and rolling activities that provide opportunities for people of all ages and abilities
- Work with SAIL to review trail, amenities, and future projects for ideas on universal design, multi-sensory experiences, and adaptive equipment needs for those with disabilities
- Provide easily identifiable trailheads for easy access to trail

GOAL #5: PROVIDE QUALITY OUTDOOR RECREATIONAL EXPERIENCES IN BALANCE WITH RESOURCE MANAGEMENT AND CONSERVATION

Objectives:

- Provide a long distance, multi-use, interpretive trail system that can be maintained into the future
- Seek connections to similar trails to provide continuity
- Purchase property alongside or on either end that will add and/or extend the IOHT

GOAL #6 ENHANCE THE HEALTH OF THE RESIDENTS AND VISITORS BY PROVIDING FOR THEIR PHYSICAL AND MENTAL HEALTH

Objectives:

- Provide a long distance, upgraded trail that provides for physical activities which enhances physical and mental health of the user
- Provide educational rest areas
- Provide safe pedestrian, bike and motorized crossings at intersections
- Offer different experiences for different types of trail users

GOAL #7 - ENHANCE ECONOMIC PROSPERITY BY SUPPORTING A HIGH QUALITY OF LIFE THAT ATTRACTS AND RETAINS A TALENTED WORK FORCE AND OPENS UP AVENUES FOR SMALL BUSINESS

Objectives:

- Marquette County has a reputation as a mecca for outdoor enthusiasts. The IOHRA wants to continue to expand that reputation and provide the infrastructure that supports talent and business owners
- Continue our collaboration with local, state, federal and private entities to develop the recreation and transportation route
- Seek opportunities to expand and develop trailheads, public access sites, and other facilities which encourage the outdoor recreationalist to use the asset created

Action Plans

The construction and maintenance necessary for the IOHT is funded by a Recreation Authority tax that has passed in eight municipalities in 2010 and recently renewed in 2022. The annual income from our .1970 millage is \$320,000. This funding will be used for:

- operations,
- maintenance and
- capital improvements.

The IOHRA has secured ownership or easement along the entire trail. Our priority projects will be expansion of the trail for various trail users, trail amenities that add to the function and enjoyment of the trail, and building capacity within our organization.

Priority projects are listed below along with projected costs. In all cases, potential funding sources include MDOT Transportation Alternatives Funds, Michigan Natural Resources Trust Fund, ORV Funds, Michigan Arts and Council grants, Michigan Land and Water Conservation Fund, Michigan Rural Development Fund and State Passport Fund. We will also seek Spark Funds, 2% Gaming Funds, EDC funds, and Health and Community Foundation funds.

ACTION PLAN 1: EXTEND THE TRAIL WITHIN OUR GEOGRAPHIC BOUNDARIES AND SEPARATE MOTORIZED AND NON-MOTORIZED WHEREVER POSSIBLE

• Add 5 mile non-motorized trail extension to Lakenenland	\$600,000
• Extension from Lakenenland to Marquette/Alger border if a concerted effort is made by Alger County to connect	\$125,000
• Connect from downtown Republic to Republic Wetlands if access opens up, 2 miles	\$250,000
• Extend ORV trail from Negaunee Ice Arena to M35/492 intersection, 4 miles	\$ 40,000

ACTION PLAN 2: ADD AMENITIES THAT HELP WITH ACCESSIBILITY AND ENHANCE THE TRAIL

• Install lighting on xc ski trail, Ishpeming, 1.25 miles	\$ 100,000
• Vault Toilets at Lakenenland, Winthrop Junction, Schwemwood and Stoneville road Trailheads	\$ 90,000
• Interpretive Destination Node between Kawbawgam Road and Lakenenland about Natural Resources of Jack Pine Forest	\$10,000

- Add interpretive elements, benches and mile markers (through sponsorship program), where needed and enough land available to fit N/A
- Work with Superior Alliance for Independent Living to review trail and provide feedback on accessibility N/A

ACTION PLAN 3: SURFACE UPGRADES

- Upgrade surfacing of 12 miles of trail in Ely and Humboldt Townships should they join Recreation Authority \$1.5 M
- Develop Singletrack trails along our main trail and through IOHT-owned property \$100,000
- Upgrade sections from crushed aggregate to asphalt/concrete 2 miles \$200,000

ACTION PLAN 4: MAINTENANCE ENHANCEMENT

- Build maintenance capacity within the IOHT with purchase of vehicle, tractor, trailer, tools, storage facility \$86,000
- Hire part time maintenance staff as necessary N/A

ACTION PLAN 5: LAND PURCHASES

- Land purchases will only be considered if the land can be used to extend the trail, provide for connections or buffer the trail. We will only purchase land if the municipality, in which the land lays, approves of the purchase.

The 2023 - 2027 Iron Ore Heritage Trail Recreation Survey - Only Eleven Questions

Wednesday, November 09, 2022

337

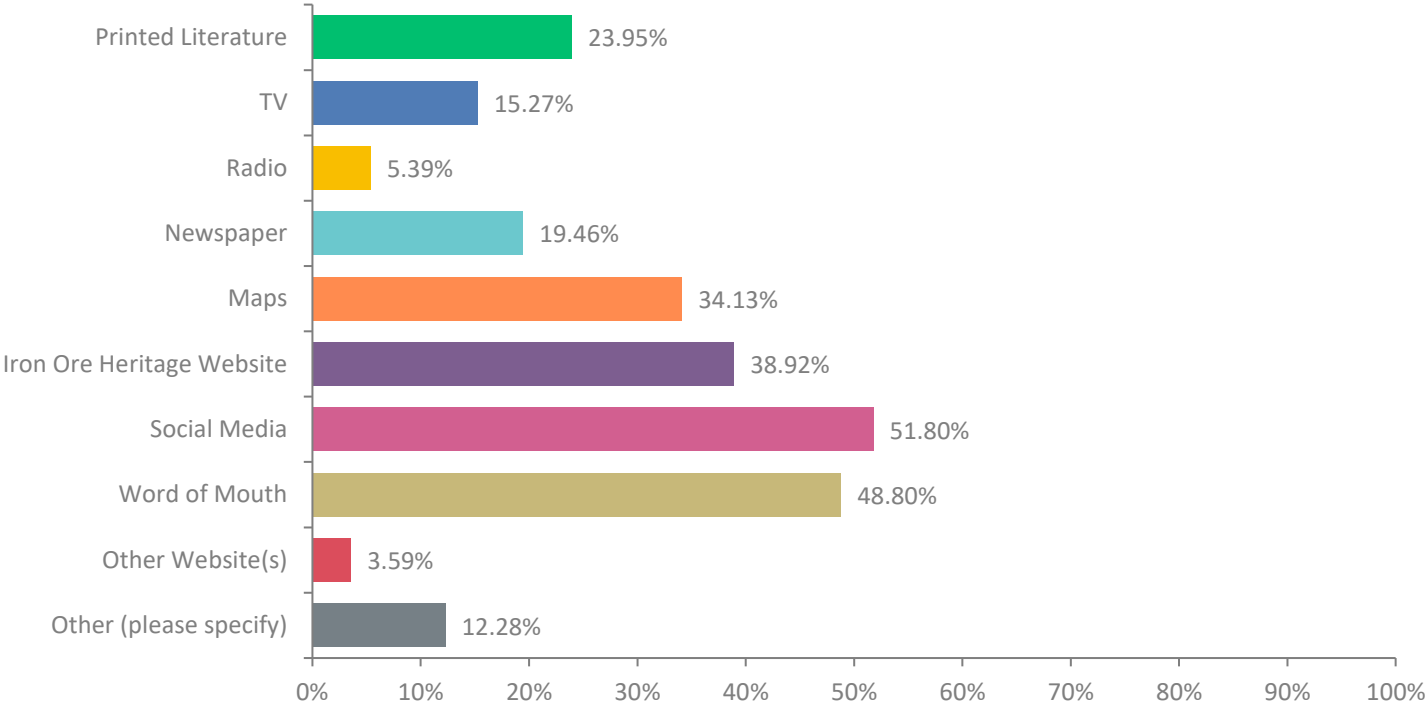
Total Responses

Date Created: Wednesday, July 27, 2022

Complete Responses: 337

Q2: Where do you get your information about the Iron Ore Heritage Trail? (Choose as many you use)

Answered: 334 Skipped: 3



Q2: Where do you get your information about the Iron Ore Heritage Trail? (Choose as many you use)

Answered: 334 Skipped: 3

ANSWER CHOICES	RESPONSES	
Printed Literature	23.95%	80
TV	15.27%	51
Radio	5.39%	18
Newspaper	19.46%	65
Maps	34.13%	114
Iron Ore Heritage Website	38.92%	130
Social Media	51.80%	173
Word of Mouth	48.80%	163
Other Website(s)	3.59%	12
Other (please specify)	12.28%	41

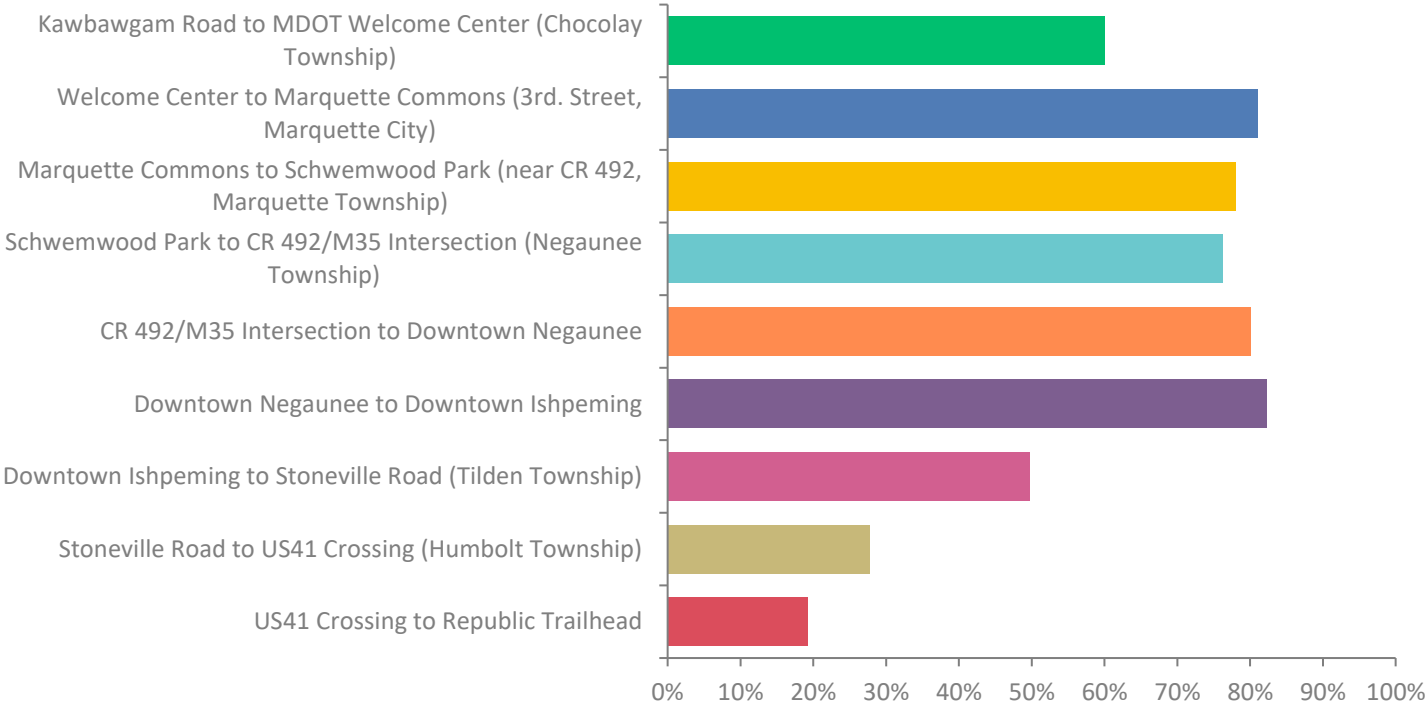
Q2: Where do you get your information about the Iron Ore Heritage Trail? (Choose as many you use)

Answered: 334 Skipped: 3

BASIC STATISTICS					
	Min	Max	Median	Mean	Standard Deviation
	1.00	11.00	6.00	5.82	2.52

Q3: Which sections of the Trail have you been on? (Choose all that apply)

Answered: 328 Skipped: 9



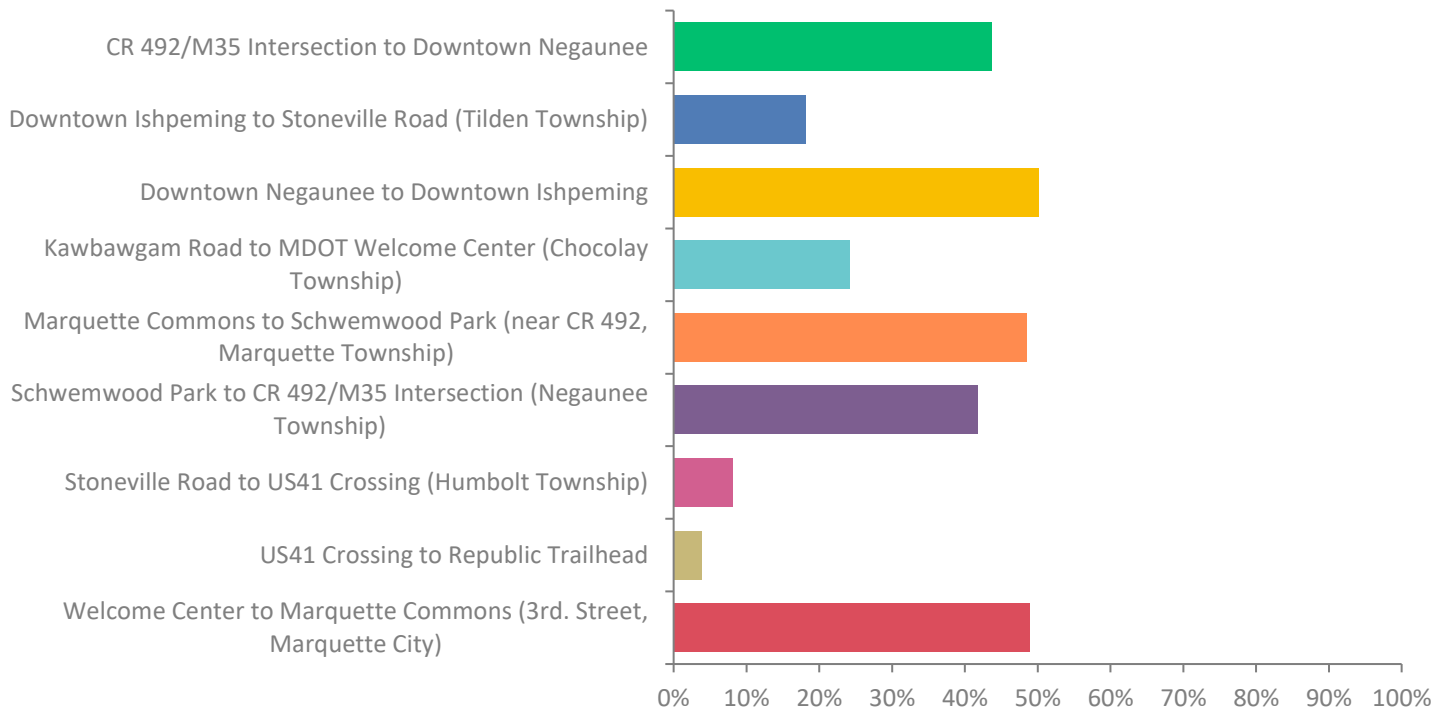
Q3: Which sections of the Trail have you been on? (Choose all that apply)

Answered: 328 Skipped: 9

ANSWER CHOICES	RESPONSES	
Kawbawgam Road to MDOT Welcome Center (Chocolay Township)	60.06%	197
Welcome Center to Marquette Commons (3rd. Street, Marquette City)	81.10%	266
Marquette Commons to Schwemwood Park (near CR 492, Marquette Township)	78.05%	256
Schwemwood Park to CR 492/M35 Intersection (Negaunee Township)	76.22%	250
CR 492/M35 Intersection to Downtown Negaunee	80.18%	263
Downtown Negaunee to Downtown Ishpeming	82.32%	270

Q4: Which sections of the Trail do you use most often? (Choose all that apply)

Answered: 309 Skipped: 28



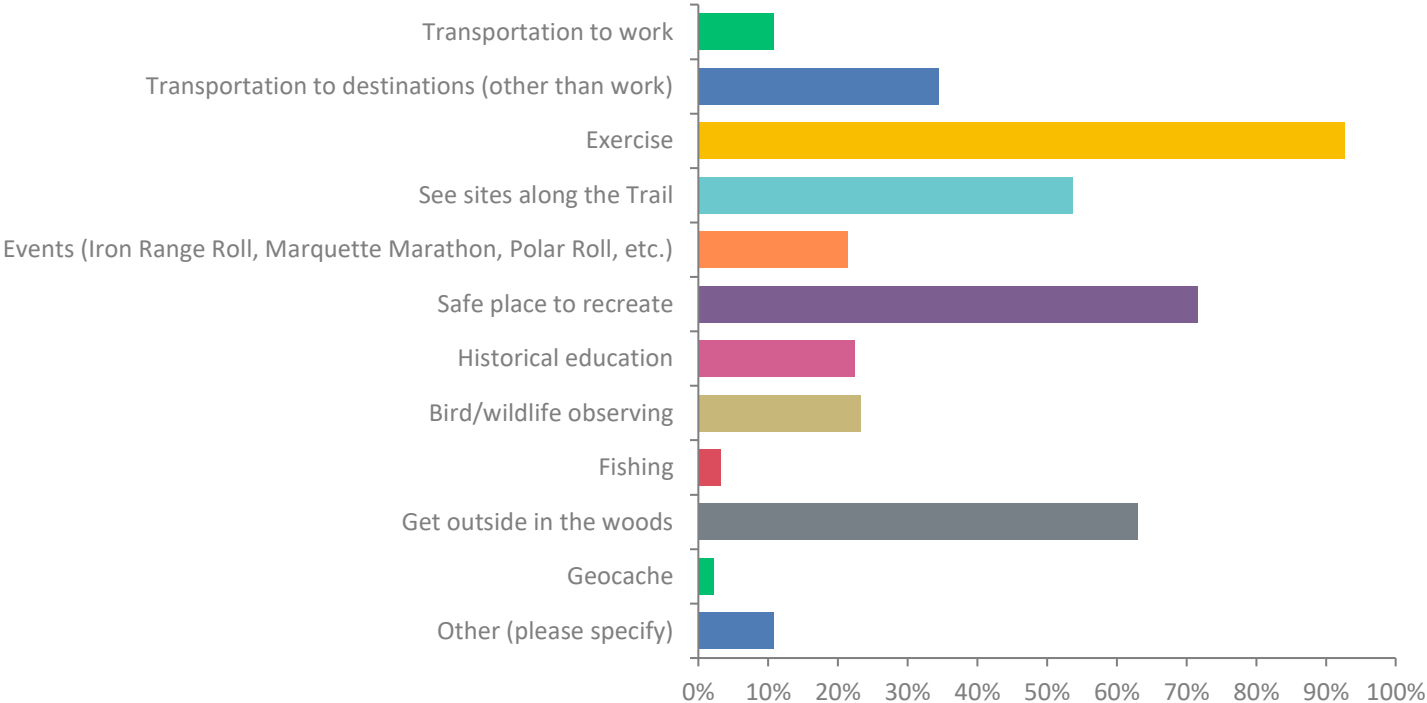
Q4: Which sections of the Trail do you use most often? (Choose all that apply)

Answered: 309 Skipped: 28

ANSWER CHOICES	RESPONSES	
CR 492/M35 Intersection to Downtown Negaunee	43.69%	135
Downtown Ishpeming to Stoneville Road (Tilden Township)	18.12%	56
Downtown Negaunee to Downtown Ishpeming	50.16%	155
Kawbawgam Road to MDOT Welcome Center (Chocolay Township)	24.27%	75
Marquette Commons to Schwemwood Park (near CR 492, Marquette Township)	48.54%	150
Schwemwood Park to CR 492/M35 Intersection (Negaunee Township)	41.75%	129
Stoneville Road to US41 Crossing	8.09%	25

Q6: Why do you use the Trail? (Choose all that apply)

Answered: 313 Skipped: 24



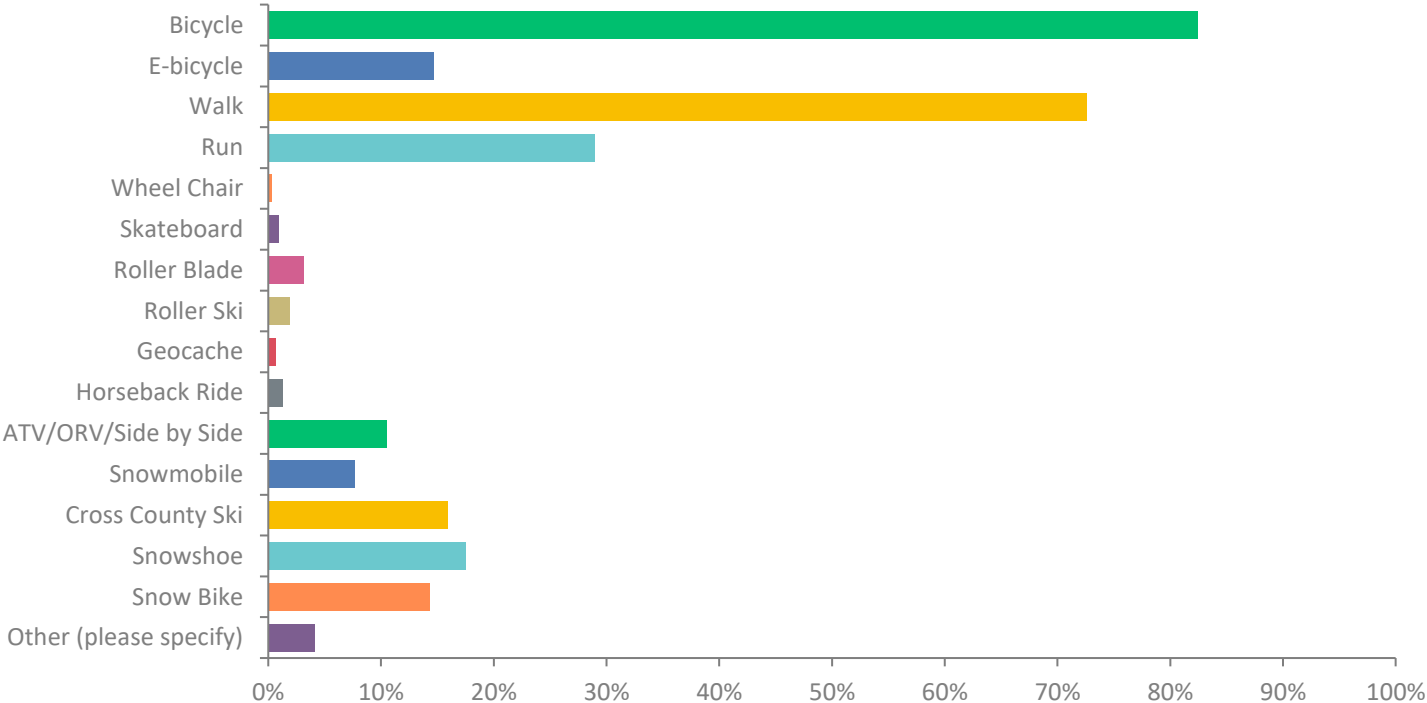
Q6: Why do you use the Trail? (Choose all that apply)

Answered: 313 Skipped: 24

ANSWER CHOICES	RESPONSES	
Transportation to work	10.86%	34
Transportation to destinations (other than work)	34.50%	108
Exercise	92.65%	290
See sites along the Trail	53.67%	168
Events (Iron Range Roll, Marquette Marathon, Polar Roll, etc.)	21.41%	67
Safe place to recreate	71.57%	224
Historical education	22.36%	70
Bird/wildlife observing	23.32%	73
	3.19%	10

Q7: What ways do you use the Trail? (Choose all that apply)

Answered: 314 Skipped: 23



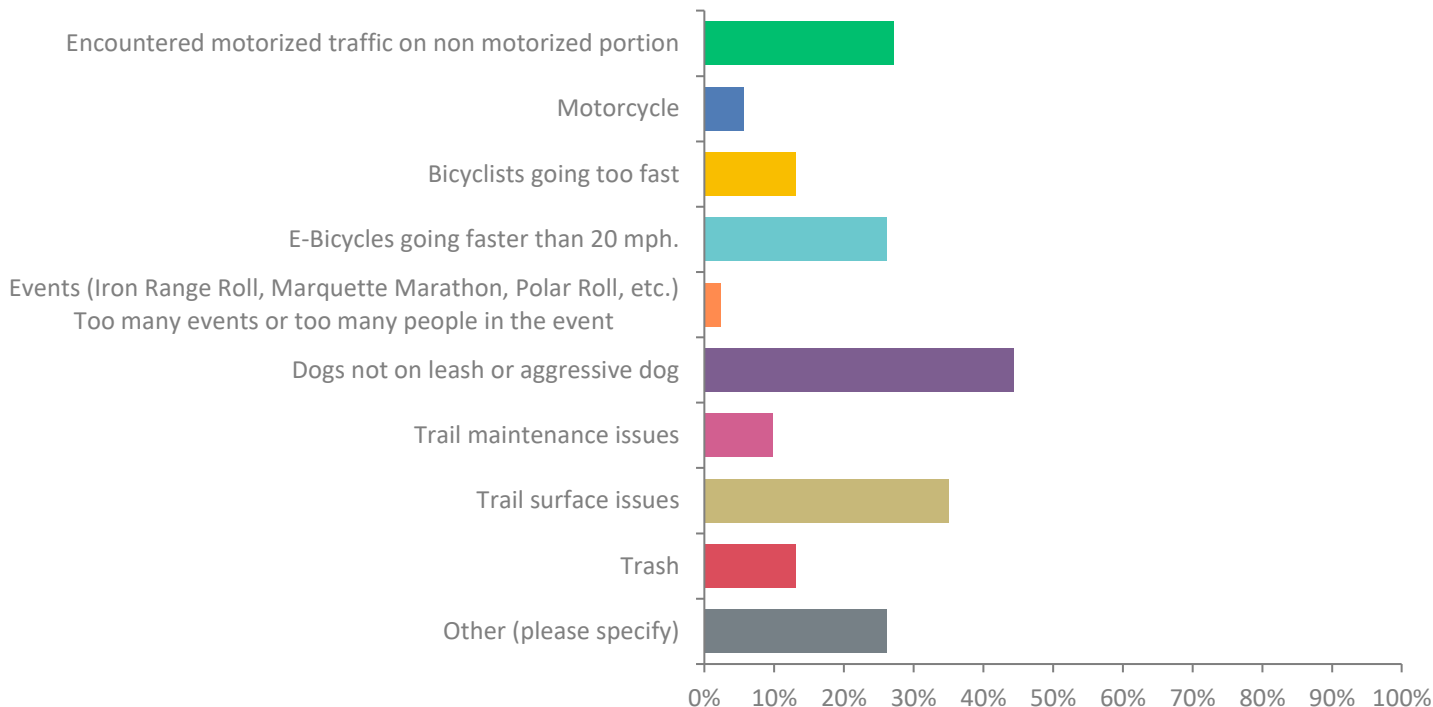
Q7: What ways do you use the Trail? (Choose all that apply)

Answered: 314 Skipped: 23

ANSWER CHOICES	RESPONSES	
Bicycle	82.48%	259
E-bicycle	14.65%	46
Walk	72.61%	228
Run	28.98%	91
Wheel Chair	0.32%	1
Skateboard	0.96%	3
Roller Blade	3.18%	10
Roller Ski	1.91%	6
Geocache	0.64%	2
Horseback Ride	1.27%	4

Q8: Have you ever experienced any problems on the Trail? (Choose all that apply)

Answered: 214 Skipped: 123



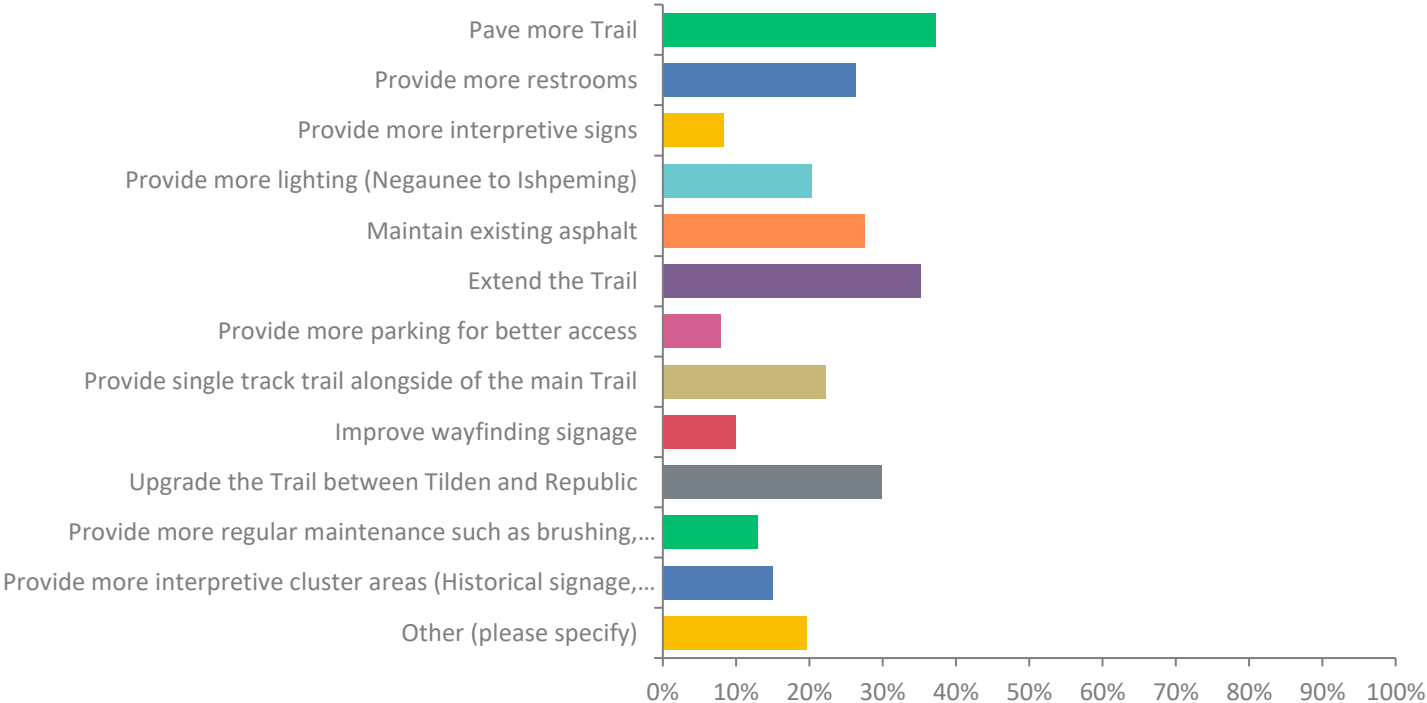
Q8: Have you ever experienced any problems on the Trail? (Choose all that apply)

Answered: 214 Skipped: 123

ANSWER CHOICES	RESPONSES	
Encountered motorized traffic on non motorized portion	27.10%	58
Motorcycle	5.61%	12
Bicyclists going too fast	13.08%	28
E-Bicycles going faster than 20 mph.	26.17%	56
Events (Iron Range Roll, Marquette Marathon, Polar Roll, etc.) Too many events or too many people in the event	2.34%	5
Dogs not on leash or aggressive dog	44.39%	95
Trail maintenance issues	9.81%	21
Trail surface issues	35.05%	75

Q9: What improvements would you like to see? (Choose your top 3)

Answered: 301 Skipped: 36



Q9: What improvements would you like to see? (Choose your top 3)

Answered: 301 Skipped: 36

ANSWER CHOICES	RESPONSES	
Pave more Trail	37.21%	112
Provide more restrooms	26.25%	79
Provide more interpretive signs	8.31%	25
Provide more lighting (Negaunee to Ishpeming)	20.27%	61
Maintain existing asphalt	27.57%	83
Extend the Trail	35.22%	106
Provide more parking for better access	7.97%	24
Provide single track trail alongside of the main Trail	22.26%	67

ARTICLES OF INCORPORATION FOR THE IRON ORE HERITAGE RECREATION AUTHORITY

These Articles of Incorporation are adopted, signed, and acknowledged by the incorporating units for the purpose of forming a recreational authority under the provisions of Act No. 321, Public Acts of 2000 (the "Recreational Authorities Act").

ARTICLE I NAME

This authority shall be known as the Iron Ore Heritage Recreation Authority, hereinafter referred to as the Authority.

ARTICLE II PARTICIPATING MUNICIPALITIES AND TERRITORY

The participating municipalities are the Township of Chocolay, the City of Marquette, the Township of Marquette, the Township of Negaunee, the City of Negaunee, the City of Ishpeming, the Township of Ely, and the Township of Republic, each a municipal corporation of Michigan. They are hereafter referred to as the participating municipalities. The "territory of the Authority" shall be the corporate boundaries of each participating municipality.

ARTICLE III ADDITION OR WITHDRAWAL OF PARTICIPATING MUNICIPALITIES

Section 1 A municipality may become a participating municipality in the Authority only upon an affirmative vote of the Recreation Authority and the proposed participating municipality. If the Authority has been authorized to levy a tax, the addition of another participating municipality shall be contingent upon approval by the electors of the proposed municipality of a tax, equivalent to that which is being levied by the municipalities in millage rate and term at the time the proposed municipality becomes a participating municipality.

Section 2 A participating municipality shall not withdraw from the Authority during the period for which the Authority has been authorized to levy a tax by the electors of the Authority.

Section 3 A participating municipality may withdraw from the Authority, subject to the limitation in Section 2 of this Article, by resolution of the participating municipality's legislative body approving the withdrawal, a certified copy of the resolution shall be provided to the Board at least 60 days prior to the effective date of the withdrawal.

ARTICLE IV PURPOSES

The purposes for which the Authority is established are as follows:

- A. To acquire, construct, operate, maintain or improve a public park for recreational purposes, specifically limited to a permanent, year-round signed and surfaced trail system, which trail system shall be open to the public for use under such terms, conditions, and limitations as may be established by the Governing Board of the Authority.
- B. To provide for a multi-use trail system that connects populated areas, subject to the limitations set forth in Paragraph A. above.
- C. To provide amenities along the trail including parking areas, bike racks, directional signage, interpretative signage, kiosks, trailhead facilities, etc., that add to the enjoyment of the trail experience.
- D. To encourage tourism development along the trail system.
- E. To encourage municipalities or other entities to tie compatible links into the trail system allowing for greater access to businesses, parks, and schools.
- F. To conduct such other activities as are permitted under the laws of the State of Michigan, particularly the Recreational Authorities Act, Act No. 321, Public Acts of 2000.

ARTICLE V POWERS AND DUTIES

Section 1 The Authority is an authority under Section 6 of Article IX of the State Constitution of 1963. It shall be a body corporate with power to sue and be sued in any court of the State of Michigan. It shall have the powers and duties as established by the Recreational Authorities Act (being MCL 123.1131, et seq.) and incidental thereto.

Section 2 The Authority shall have the power to acquire and hold, by purchase, lease, option, grant, gift, devise, land contract, installment purchase contract, bequest, or other legal means, real and personal property inside or outside the territory of the Authority. The property may include franchises, easements, or rights of way on, under, or above any property. The Authority may pay for the property from, or pledge for the payment of the property, revenue of the Authority.

Section 3 The Authority may donate, sell, lease or otherwise transfer its property or any part thereof or interest therein to one or more of the participating municipalities or to any other person or entity.

Section 4 The Authority may apply for and accept grants and contributions from individuals, the federal government or any of its agencies, the State of Michigan, a municipality, or other public or private agencies to be used for any of the purposes of the Authority.

Section 5 The Authority may borrow money and issue revenue bonds or notes to finance the acquisition, construction, and improvement of its recreational purposes. Bonds or

notes issued by the Authority are a debt of the Authority and not of the participating municipalities.

Section 6 Before a proposal for a tax to fund the activities of the Authority is placed before the electors in each of the participating municipalities, the proposal shall be adopted by a resolution of the Board and certified by the Board not later than 60 days before the election in accordance with the recreational authorities act. The provisions of the ballot proposal shall comply with said act.

Section 7 The Authority may hire full-time or part-time employees and retain professional services.

Section 8 The Authority may provide for the maintenance of all of the real and personal property of the Authority.

Section 9 The Authority may assess and collect user fees for services provided by and expenses incurred by the Authority.

Section 10 The Authority may receive revenue as appropriated by the legislature of the State of Michigan or a participating municipality.

Section 11 The Authority may enter into contracts incidental to or necessary for the accomplishment of the purposes of the Authority.

Section 12 The Authority's operation of public facilities shall be limited to only those public facilities and lands that it has acquired, that have been transferred to the Authority by a participating municipality or through contracts, leases, easements, gifts or other means as provided in the Recreation Authority Act , Act 321 of 2000. Nothing in these Articles shall obligate a participating municipality to transfer any park, recreation center, or any land or interest therein to the Authority.

Section 13 The fiscal year of the Authority shall be the calendar year.

ARTICLE VI GOVERNING BOARD

Section 1 The business and affairs of the Authority shall be managed by a Board of Directors, which is the governing body of the Authority. The Board of Directors shall consist of an odd number of members, with one member to be appointed by the legislative body of each participating municipality. Should the Authority grow or shrink to represent an even number of participating municipalities, the legislative body of Marquette County will appoint a member to maintain an odd number of directors. The County appointed member must be a qualified elector of one of the participating municipalities of the Authority. The County appointed member will come off the Board should the number of participating municipalities become an odd number.

Section 2 All Authority decisions must be passed by a majority of the members of the Board.

Section 3 Members of the legislative body of a participating municipality are eligible for appointment to the Board. Each municipal appointee must be a qualified elector residing in the appointing jurisdiction.

Section 4 The terms of the initial Board of Directors shall be three (3) years. After the initial three years, the terms of the Board members shall be staggered so that the terms of approximately one-third (1/3) of the Board members expire each year. The Board shall select a random method to stagger the terms. Board members may be re-appointed.

Section 5 The Board shall adopt and amend bylaws including rules of procedure consistent with the provisions of the Recreational Authorities Act. The bylaws shall provide for regular meetings of the Board, not less frequent than quarterly.

Section 6 The Board shall select the following officers: Chairperson, Treasurer, and Secretary. There may also be such assistant officers as the Board of Directors deems appropriate. The duties of each office shall be as set forth in the bylaws.

Section 7 No member of the Board shall receive compensation for services as a member of the Board but members of the Board are entitled to reimbursement for reasonable expenses, including expenses for travel previously authorized by the Board, incurred in the discharge of his or her duties.

Section 8 A member of the Board may be removed from office as provided by and in accordance with the Recreational Authorities Act.

Section 9 In the event a vacancy occurs on the Board because of death, resignation, removal, change of residency, or other reason as set forth in MCL 201.3, the vacancy shall be filled within 30 days of the vacancy occurring in the same manner as the original appointment, and the member appointed shall serve for the remainder of the unexpired term.

Section 10 Officer vacancies shall be filled by a majority vote of the members of the Board of Directors present at any regular or special meeting of the Board which shall elect a successor to serve until the expiration of the normal term of such officer or until his or her successor shall be elected.

ARTICLE VII DISSOLUTION OF AUTHORITY

The Authority shall be automatically dissolved within sixty (60) days from and after the election date if any of the electors in any of the participating municipalities of the Authority fail to approve a public recreation tax on all of the taxable property within each of the participating municipalities of the Authority by November 2008. Notwithstanding the foregoing, if the participating municipalities, acting through their respective governing bodies within such sixty (60) day period, elect to extend its duration, then the Authority shall continue for so long as then specified by the participating municipalities. If the electors so approve such tax, the Authority's duration shall continue for so long as an approved millage remains in effect.

ARTICLE VIII PUBLIC BODY

The Authority is a public body and shall comply with the requirements of the Michigan Open Meetings Act, Act 267 of the Public Acts of 1976, as amended, and the Freedom of Information Act, Act 442 of the Public Acts of 1976, as amended.

ARTICLE IX AUDIT

The Board shall obtain an annual audit of the Authority pursuant to Section 27 of the act, being MCL 123.1157. The books and records of the Authority shall be open for inspection by any participating municipality at all reasonable times.

ARTICLE X PUBLICATION AND ADOPTION

Section 1 A copy of these Articles of Incorporation shall be published once in the *Mining Journal*, being a newspaper generally circulated within the participating municipalities, prior to adoption as set forth in Section 2 below.

Section 2 These Articles of Incorporation shall be adopted by an affirmative vote of a majority of the members serving on the legislative body of each participating municipality.

ARTICLE XI AMENDMENT

Amendment to these Articles of Incorporation shall be made only as authorized by the Recreational Authorities Act. Amendments shall be published once in the *Mining Journal* no less than fourteen (14) days before adoption.

ARTICLE XII EFFECTIVE DATE

These Articles of Incorporation shall become effective upon filing with the Secretary of State by the clerk of the last participating municipality to adopt the Articles.

IN WITNESS WHEREOF, the participating municipalities have adopted and authorized to be executed these Articles of Incorporation, in behalf of the City of Marquette, by the Mayor and the City Clerk, and the City of Negaunee, by the Mayor and the City Clerk, and the City of Ishpeming, by the Mayor and the City Clerk, and the Township of Chocolay, by the Supervisor and the Township Clerk, and the Township of Marquette, by the Supervisor and the Township Clerk, and the Township of Negaunee, by the Supervisor and the Township Clerk, and the

Township of Ely, by the Supervisor and the Township Clerk, and the Township of Republic, by the Supervisor and the Township Clerk.

CITY OF MARQUETTE, a Michigan
municipal corporation.

Thomas Tourville
Thomas Tourville, Mayor

David J. Bleau
David J. Bleau, City Clerk

The foregoing Articles of Incorporation were adopted by the City Commission of the City of Marquette, Michigan, at a special meeting duly held on the 12th day of March, 2007.

Dated: June 6, 2007

David J. Bleau
David J. Bleau, City Clerk

CITY OF NEGAUNEE, a Michigan
municipal corporation.

Kimme Peterson
Kimme Peterson, Mayor

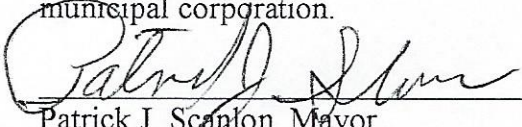
Joan Terzaghi
Joan Terzaghi, City Clerk

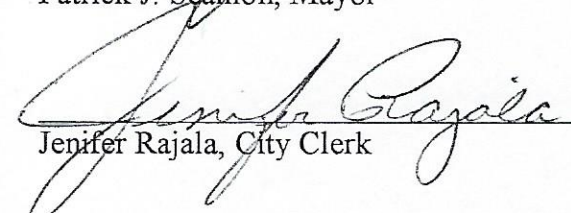
The foregoing Articles of Incorporation were adopted by the City Council of the City of Negaunee, Michigan, at a special meeting duly held on the 12th day of April, 2007.

Dated: 6-6-07

Joan Terzaghi
Joan Terzaghi, City Clerk

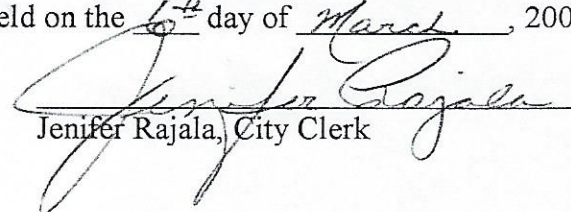
CITY OF ISHPERING, a Michigan
municipal corporation.


Patrick J. Scanlon, Mayor

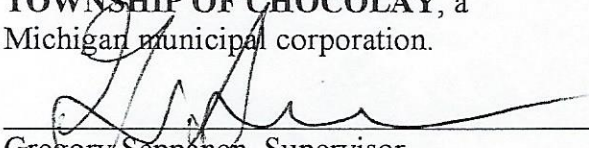

Jenifer Rajala, City Clerk

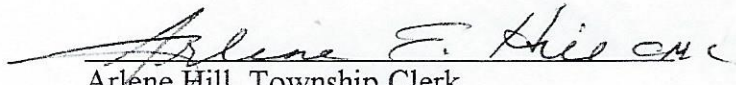
The foregoing Articles of Incorporation were adopted by the City Council of the City of
Ishpeming, Michigan, at a special meeting duly held on the 6th day of March, 2007.

Dated: June 6, 2007


Jenifer Rajala, City Clerk

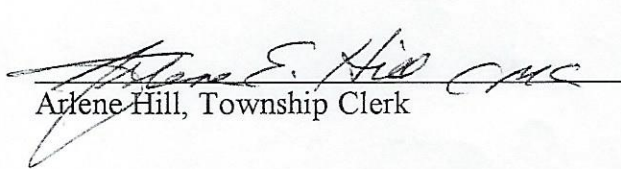
TOWNSHIP OF CHOCOLAY, a
Michigan municipal corporation.


Gregory Seppanen, Supervisor



Arlene Hill, Township Clerk

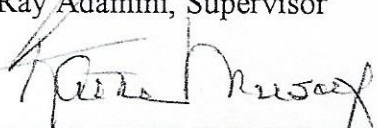
The foregoing Articles of Incorporation were adopted by the Township of Chocoday
Board at a special meeting duly held on the 21 day of May, 2007.

Dated: June 5, 2007


Arlene Hill, Township Clerk


TOWNSHIP OF MARQUETTE, a
Michigan municipal corporation.


Ray Adamini, Supervisor

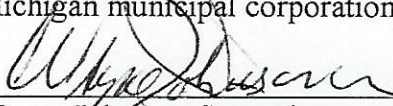

Kathleen Musolf, Township Clerk


The foregoing Articles of Incorporation were adopted by the Township of Marquette Board at a special meeting duly held on the 21 day of May, 2007.

Dated: 5-31-07



Kathleen Musolf, Township Clerk

TOWNSHIP OF NEGAUNEE, a
Michigan municipal corporation


Wayne Johnson, Supervisor


Rachel Sertich, Township Clerk

The foregoing Articles of Incorporation were adopted by the Township of Negaunee Board at a special meeting duly held on the 10th day of May, 2007.


Rachel Sertich, Township Clerk

TOWNSHIP OF ELY, a Michigan
municipal corporation.

Ted Pepin
Ted Pepin, Supervisor

Kim Wing
Kim Wing, Township Clerk

The foregoing Articles of Incorporation were adopted by the Township of Ely Board
at a special meeting duly held on the ____ day of _____, 2007.

Dated: _____

Kim Wing
Kim Wing, Township Clerk

TOWNSHIP OF REPUBLIC, a Michigan
municipal corporation.

Gary Johnson
Gary Johnson, Supervisor

Vickie Skogman
Vickie Skogman, Township Clerk

The foregoing Articles of Incorporation were adopted by the Township of Republic
Board at a special meeting duly held on the 22 day of February, 2007.

Dated: 06-06-07

Vickie Skogman
Vickie Skogman, Township Clerk

Iron Ore Heritage Recreation Authority
ADDENDUM I dated July 25, 2007

TOWNSHIP OF HUMBOLDT, a Michigan
municipal corporation

Marvin W. Ruspakka
Marvin Ruspakka, Supervisor

Jill Rankinen
Jill Rankinen, Township Clerk

The foregoing Articles of Incorporation were adopted by the Township of
Humboldt Board at a township meeting duly held on the 7 day of July,
2007.

Dated: 7-9-2007

Jill Rankinen
Jill Rankinen, Clerk

TOWNSHIP OF TILDEN, a Michigan municipal
corporation

Dennis Tonge
Dennis Tonge, Supervisor

Jason Douglas Brown
Jason Douglas Brown, Township Clerk

The foregoing Articles of Incorporation were adopted by the Township of Tilden
Board at a township meeting duly held on the 19th day of June, 2007.

Dated: 9-4-07

Jason Douglas Brown
Jason Douglas Brown, Township Clerk

Dated: 8-1-07

James Thomas
James Thomas, Chair, Iron Ore Heritage
Recreation Authority

Iron Ore Heritage Recreation Authority
Profit & Loss Budget vs. Actual
January through December 2022

													TOTAL
	Jan 22	Feb 22	Mar 22	Apr 22	May 22	Jun 22	Jul 22	Aug 22	Sep 22	Oct 22	Nov 22	Dec 22	Jan - Dec 22
Balance Fund													479,000
Ordinary Income/Expense													
Income													
018-016 · other receivables	0.00	0.00	0.00	0.00	0.00	0.00	0.00	0.00	0.00	0.00	0.00	0.00	0.00
General Revenue													
674-002 · Individual Contributions	96.02	0.00	0.00	0.00	25.00	18.93	120.00	0.00	0.00	0.00	0.00	0.00	259.95
674-001 · Corporate Contributions	0.00	0.00	0.00	0.00	0.00	0.00	0.00	0.00	0.00	0.00	0.00	0.00	0.00
401-000 · Taxes													
441 · IOCAL cOMMUNITY sTABILIZATION	0.00	0.00	0.00	0.00	0.00	0.00	0.00	0.00	0.00	801.91	0.00	0.00	801.91
401-000 · Taxes - Other	335,000.00	0.00	0.00	38.72	0.00	0.00	0.00	-143.70	-40.19	246.10	0.00	0.00	335,100.93
Total 401-000 · Taxes	335,000.00	0.00	0.00	38.72	0.00	0.00	0.00	-143.70	-40.19	1,048.01	0.00	0.00	335,902.84
664-000 · Interest	100.00	100.00	100.00	100.00	100.00	100.00	100.00	100.00	100.00	100.00	100.00	100.00	1,200.00
671-000 · Other Revenue	0.00	0.00	0.00	0.00	0.00	0.00	0.00	0.00	506.00	44.44	0.00	0.00	550.44
Total General Revenue	335,196.02	100.00	100.00	138.72	125.00	118.93	220.00	-43.70	565.81	1,192.45	100.00	100.00	337,913.23
Program Revenue													
Unrestricted													
580-000 · Local governmental units	0.00	0.00	0.00	0.00	0.00	0.00	0.00	0.00	0.00	0.00	0.00	0.00	0.00
642-000 · Promo Sales	45.90	0.00	15.90	0.00	30.90	0.00	30.00	0.00	15.90	30.00	0.00	0.00	168.60
Total Unrestricted	45.90	0.00	15.90	0.00	30.90	0.00	30.00	0.00	15.90	30.00	0.00	0.00	168.60
Restricted													
674-004 · benches	0.00	0.00	0.00	0.00	0.00	0.00	0.00	0.00	0.00	0.00	0.00	0.00	0.00
538-000 · ORV State Grant	0.00	0.00	0.00	0.00	0.00	0.00	25,000.00	25,000.00	10,000.00	0.00	0.00	0.00	60,000.00
674-005 · Individual Contribution	0.00	0.00	0.00	0.00	0.00	0.00	0.00	0.00	0.00	0.00	0.00	0.00	0.00
674-003 · Mile Marker	0.00	0.00	0.00	0.00	750.00	0.00	750.00	0.00	750.00	0.00	0.00	0.00	2,250.00
539-000 · State Grants	0.00	0.00	0.00	0.00	0.00	0.00	109,000.00	56,000.00	109,700.00	0.00	0.00	0.00	274,700.00
540-000 · Corporate & Nonprofit Grants	0.00	0.00	0.00	0.00	95.00	0.00	0.00		0.00	0.00	0.00	0.00	95.00
Restricted - Other	0.00	0.00	0.00	0.00	0.00	0.00	0.00	0.00	0.00	0.00	0.00	0.00	0.00
Total Restricted	0.00	0.00	0.00	0.00	845.00	0.00	134,750.00	81,000.00	120,450.00	0.00	0.00	0.00	337,045.00
Total Program Revenue	45.90	0.00	15.90	0.00	875.90	0.00	134,780.00	81,000.00	120,465.90	30.00	0.00	0.00	337,213.60
Total Income	335,241.92	100.00	115.90	138.72	1,000.90	118.93	135,000.00	80,956.30	121,031.71	1,222.45	100.00	100.00	675,126.83
Cost of Goods Sold													
50000 · Cost of Goods Sold	0.00	0.00	0.00	0.00	0.00	0.00	0.00	0.00	0.00	0.00	0.00	0.00	0.00
Total COGS	0.00	0.00	0.00	0.00	0.00	0.00	0.00	0.00	0.00	0.00	0.00	0.00	0.00
Gross Profit	335,241.92	100.00	115.90	138.72	1,000.90	118.93	135,000.00	80,956.30	121,031.71	1,222.45	100.00	100.00	675,126.83
Expense													
62800 · Facilities and Equipment													
72Equipment	0.00	0.00	0.00	0.00	45,000.00	30,000.00	5,000.00	0.00	0.00	0.00	0.00	0.00	80,000.00
62890 · Rent, Parking, Utilities	330.00	330.00	330.00	330.00	330.00	330.00	330.00	330.00	330.00	330.00	330.00	330.00	3,960.00
Total 62800 · Facilities and Equipment	330.00	330.00	330.00	330.00	45,330.00	30,330.00	5,330.00	330.00	330.00	330.00	330.00	330.00	83,960.00
701-000 · Payroll													

	TOTAL												
	Jan 22	Feb 22	Mar 22	Apr 22	May 22	Jun 22	Jul 22	Aug 22	Sep 22	Oct 22	Nov 22	Dec 22	Jan - Dec 22
701-001 · Salaries and Wages	6,191.00	6,191.00	6,191.00	6,191.00	6,191.00	11,390.00	11,390.00	11,390.00	11,390.00	11,390.00	11,390.00	11,390.00	110,685.00
701-002 · Payroll taxes	528.61	500.43	473.36	473.36	473.56	870.00	870.00	870.00	870.00	870.00	870.00	870.00	8,539.32
Total 701-000 · Payroll	6,719.61	6,691.43	6,664.36	6,664.36	6,664.56	12,260.00	12,260.00	12,260.00	12,260.00	12,260.00	12,260.00	12,260.00	119,224.32
727-000 · Office Supplies	100.00	100.00	100.00	100.00	100.00	100.00	100.00	100.00	100.00	100.00	100.00	100.00	1,200.00
730-000 · Office Equipment	0.00	0.00	90.07	0.00	0.00	0.00	1,500.00	0.00	0.00	0.00	0.00	0.00	1,590.07
754-000 · Trail Exploration Grant expense	0.00	0.00	0.00	0.00	0.00	0.00	0.00	0.00	0.00	160.63	0.00	0.00	160.63
800-000 · Operations													
800-001 · Books, Subscriptions, Reference	0.00	530.00	0.00	350.66	241.91	0.00	0.00	0.00	0.00	0.00	0.00	0.00	1,122.57
800-002 · Postage, Mailing Service	0.00	67.24	0.00	0.00	0.00	0.00	67.25	0.00	0.00	0.00	67.00	0.00	201.49
800-004 · Volunteer Recognition	0.00	0.00	0.00	338.44	100.00	0.00	45.40	49.32	0.00	0.00	0.00	0.00	533.16
Total 800-000 · Operations	0.00	597.24	0.00	689.10	341.91	0.00	112.65	49.32	0.00	0.00	67.00	0.00	1,857.22
800-955 · Insurance - Liability, D and O	0.00	0.00	0.00	0.00	0.00	0.00	0.00	0.00	0.00	0.00	0.00	800.00	800.00
800-956 · Insurance - Workers' Comp	0.00	0.00	0.00	0.00	0.00	0.00	42.00	0.00	0.00	0.00	0.00	1,000.00	1,042.00
802-000 · Accounting Contract Services	0.00	130.00	0.00	4,000.00	1,500.00	0.00	100.00	0.00	0.00	100.00	0.00	0.00	5,830.00
803-000 · Professional Services Fees	1,920.00	1,900.00	0.00	0.00	0.00	0.00	0.00	0.00	0.00	0.00	0.00	0.00	3,820.00
850-000 · Telephone, Telecommunications	80.00	80.00	80.00	80.00	80.00	80.00	80.00	80.00	80.00	80.00	80.00	180.00	1,060.00
860-000 · Travel and Meetings	0.00	0.00	0.00	0.00	0.00	0.00	0.00	0.00	0.00	0.00	0.00	0.00	0.00
870-000 · Board Meeting Expenses	10.00	10.00	10.00	10.00	10.00	10.00	10.00	10.00	10.00	10.00	10.00	10.00	120.00
880-000 · Marketing													
880-005 · Print advertising	0.00	0.00	0.00	740.41	0.00	0.00	0.00	0.00	425.57	0.00	0.00	0.00	1,165.98
881-000 · Public Relations	0.00	0.00	0.00	0.00	0.00	2,000.00	0.00	0.00	0.00	28.00	0.00	0.00	2,028.00
884-000 · Website	0.00	0.00	1,000.00	0.00	0.00	0.00	0.00	0.00	0.00	0.00	450.00	0.00	1,450.00
885-000 · Logo Apparel	0.00	52.80	0.00	0.00	501.64	0.00	0.00	0.00	0.00	500.00	0.00	0.00	1,054.44
Total 880-000 · Marketing	0.00	52.80	1,000.00	740.41	501.64	2,000.00	0.00	0.00	425.57	528.00	450.00	0.00	5,698.42
900-000 · Printing and Publishing	0.00	0.00	0.00	0.00	0.00	0.00	0.00	0.00	0.00	0.00	0.00	0.00	0.00
940-000 · Lease, Appraisal Expenses	0.00	0.00	0.00	30.00	0.00	0.00	0.00	30.00	0.00	0.00	0.00	0.00	60.00
956-000 · Property tax	0.00	0.00	0.00	0.00	0.00	0.00	0.00	0.00	0.00	0.00	0.00	0.00	0.00
970-000 · Capital Outlay													
970-100 · Signage													
970-101 · Trail directional signage	0.00	0.00	0.00	0.00	0.00	0.00	0.00	0.00	0.00	0.00	0.00	0.00	0.00
970-102 · Acknowledgement signs	0.00	0.00	0.00	0.00	0.00	0.00	108.50	0.00	0.00	0.00	0.00	0.00	108.50
970-103 · Interpretive signs	0.00	0.00	0.00	0.00	0.00	0.00	0.00	0.00	0.00	0.00	0.00	0.00	0.00
970-104 · Trail mile marker expense	0.00	0.00	0.00	0.00	0.00	650.00	650.00	0.00	650.00	0.00	0.00	0.00	1,950.00
Total 970-100 · Signage	0.00	0.00	0.00	0.00	0.00	650.00	758.50	0.00	650.00	0.00	0.00	0.00	2,058.50
970-200 · Trail Expense													
970-211 · Negaunee Township Trailhead	0.00	0.00	0.00	0.00	0.00	0.00	0.00	0.00	0.00	300.00	0.00	0.00	300.00
970-210 · Carp River Kiln	0.00	0.00	0.00	0.00	0.00	0.00	0.00	0.00	0.00	0.00	0.00	0.00	0.00
970-209 · Weather Shelters	0.00	0.00	0.00	0.00	0.00	0.00	0.00	0.00	0.00	0.00	0.00	0.00	0.00
970-204 · ORV Trail Work	0.00	0.00	0.00	0.00	632.50	25,000.00	25,000.00	25,000.00	10,532.00	0.00	0.00	0.00	86,164.50
970-208 · trail head	0.00	0.00	0.00	0.00	0.00	10,000.00	0.00	0.00	0.00	0.00	0.00	0.00	10,000.00
970-202 · Trail Supplies	200.00	200.00	200.00	200.00	200.00	500.00	500.00	500.00	500.00	200.00	200.00	200.00	3,600.00
970-203 · Trail Maintenance	0.00	0.00	0.00	1,000.00	1,000.00	65,000.00	1,000.00	1,000.00	1,000.00	1,000.00	1,000.00	0.00	72,000.00
970-205 · Negaunee to Marq. Trail Expense	0.00	0.00	0.00	0.00	0.00	0.00	0.00	0.00	0.00	0.00	0.00	0.00	0.00
970-20 Boardwalk	0.00	0.00	0.00	0.00	0.00	100,000.00	100,000.00	100,000.00	20,000.00	0.00	0.00	0.00	320,000.00

	TOTAL												
	Jan 22	Feb 22	Mar 22	Apr 22	May 22	Jun 22	Jul 22	Aug 22	Sep 22	Oct 22	Nov 22	Dec 22	Jan - Dec 22
970-206 · Grooming Expenses	0.00	0.00	0.00	1,200.00	0.00	0.00	0.00	0.00	0.00	0.00	0.00	0.00	1,200.00
Total 970-200 · Trail Expense	200.00	200.00	200.00	2,400.00	1,832.50	200,500.00	126,500.00	126,500.00	32,032.00	1,500.00	1,200.00	200.00	493,264.50
970-300 · Engineering	0.00	0.00	1,000.00	0.00	0.00	10,000.00	10,000.00	10,000.00	3,000.00	0.00	0.00	0.00	34,000.00
Total 970-000 · Capital Outlay	200.00	200.00	1,200.00	2,400.00	1,832.50	211,150.00	137,258.50	136,500.00	35,682.00	1,500.00	1,200.00	200.00	529,323.00
990-000 · Debt Service													
990-001 · Interest Payment	0.00	0.00	0.00	0.00	0.00	0.00	0.00	0.00	0.00	0.00	0.00	0.00	0.00
990-002 · Bank Fees	2.15	0.00	0.00	0.00	35.53	21.60	7.08	0.00	4.34	174.26	0.00	0.00	244.96
Total 990-000 · Debt Service	2.15	0.00	0.00	0.00	35.53	21.60	7.08	0.00	4.34	174.26	0.00	0.00	244.96
Total Expense	9,361.76	10,091.47	9,474.43	15,043.87	56,396.14	255,951.60	156,800.23	149,359.32	48,891.91	15,242.89	14,497.00	14,880.00	755,990.62
Net Ordinary Income	325,880.16	-9,991.47	-9,358.53	-14,905.15	-55,395.24	-255,832.67	-21,800.23	-68,403.02	72,139.80	-14,020.44	-14,397.00	-14,780.00	-80,863.79
Net Income	325,880.16	-9,991.47	-9,358.53	-14,905.15	-55,395.24	-255,832.67	-21,800.23	-68,403.02	72,139.80	-14,020.44	-14,397.00	-14,780.00	-80,863.79

INCOME

Taxes: Based upon 2021/2022 collections

State Grant - \$218K for Board Walk

ORV Grant - \$60K Based on 2023 grant

Interest - Based on 2.58% on \$154K and .2% on \$350K

Mile Markers - Usually sell 3

Ind. Contributions - Based upon history

Expenses

Rent/Utilities - \$275/mo rent + \$60/elec

Capital Expenses:

Salary: Based upon Admin. Contract + hiring new Admi Trail Signage: paint on roads, some add'l directional signage

Payroll Tax: 7.65% on salary + .96% on first \$9500 MI U Interp Signs: No signs planned for 2022 exc. Board walk sign inc. in boardwalk project

Truck: \$42K

ORV: Based on contract

Office Supplies: \$100/mo

Trail Supplies: toilet paper, locks, dog bags, lighting, vault toilet pumping

Office Equipment; new laptop for new Admin

Trail Maintenance: \$70K for Neg Twp surfacing, \$15K expand Stoneville,

Subscriptions: Quickbooks

\$18K for Gas for mower/truck, tools, misc.

Postage: Roll of Stamps quarterly

Truck: Buy outright or payment. Depreciation???

Volunteer Recognition: Annual meeting expenses, tees Boardwalk: Based upon grant \$318K + 5%

Liabiity insurance: Based on 2022 #

Engineering: Grant Help, boardwalk project

Workman comp: Based on history and 2nd employee for 6 mos.

Accounting: Based on Anderson/tackman contract + bookkeeper

Professional Fees: Attorney fees?

Telephone: new phone + service

Board meeting expenses: room rental and/or coffee/treats

Print Advertising: MJ ads for bids/public hearings

Public Relations: republic millage