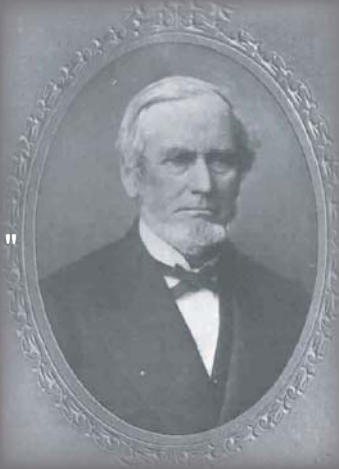


Philo Everett and the Jackson Mining Company



Philo Marshall Everett
1807 - 1892

"Persistence Pays Off"

"It is a mountain 150 feet tall of solid ore and looks as bright as a bar of iron just broken"

Philo Everett

Lured by copper in the Keweenaw, Philo Everett and his business partners from Jackson, Michigan, knew nothing about mining or the rugged Upper Peninsula, but that didn't stop them from coming north in 1845. En route, they heard about mountains of ore near Teal Lake, and changed plans. It took two attempts scouting through the tough terrain, but with the help of Ojibwa Chief Mah-je-gez-hik, they finally located the ore near this bluff. On September 20, 1845, a year and a day after William Austin Burt's original discovery, the Jackson Mining Company formally claimed the site, establishing Michigan's first iron ore mine.

